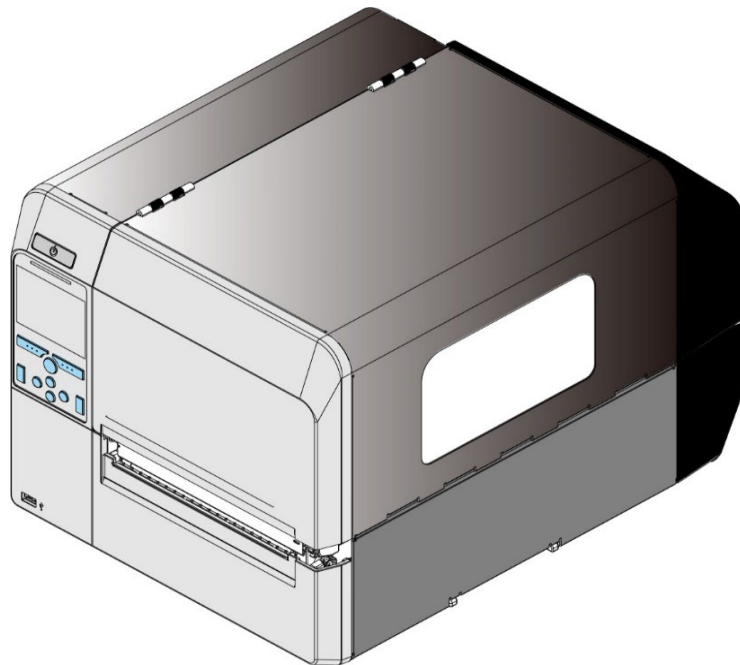




Service Parts

CL6NX PLUS



Version: CL6NX PLUS-r07-05-12-23SP

© 2020 SATO Corporation.

All rights reserved.

[FIG-2](#) [MAIN ASSY-1](#)
*1: PLATEN, HEAD SUB ASSY

[FIG-3](#) [MAIN ASSY-2](#)
*1: POWER UNIT ASSY

[FIG-4](#) [MAIN ASSY-3](#)

[FIG-5](#) [MAIN ASSY-4](#)
*1: HO RB PCB, SENSOR

[FIG-6](#) [MAIN ASSY-5](#)
*1: TORQUE LIMITER

[FIG-7](#) [OPEN COVER ASSY](#)

[FIG-8](#) [CONTROL PANEL ASSY](#)
*1: CLNX KB PCB ASSY

[FIG-9](#) [CONT PCB ASSY](#)
*1: CLNX-CONT-S PCB ASSY

[FIG-10](#) [GEAR ASSY](#)
*1: TIMING BELT

[FIG-11](#) [LABEL HOLDER ASSY](#)

[FIG-12](#) [ENGINE BASE ASSY / MAIN BASE](#)

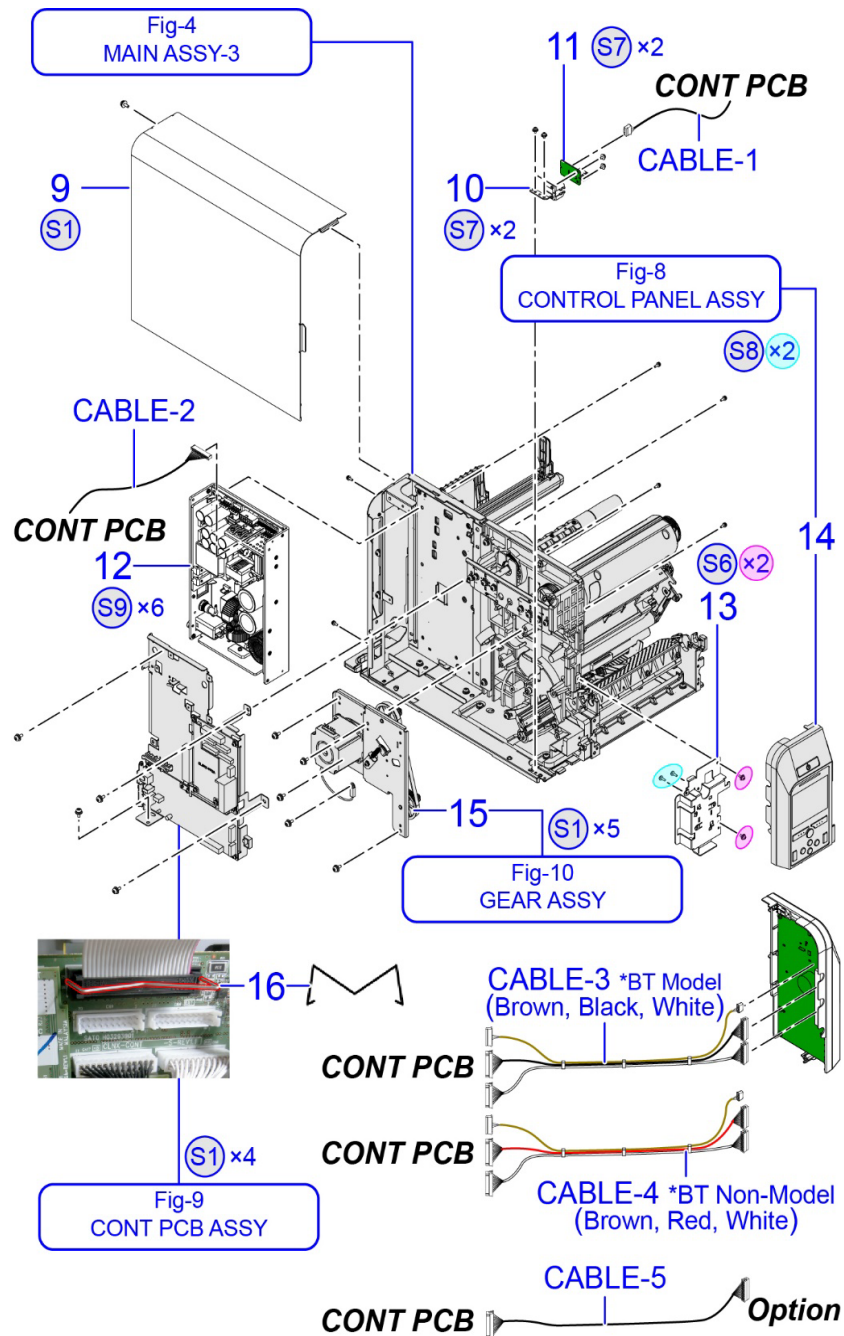
[FIG-13](#) [RIBBON UNWIND / RIBBON REWIND](#)

[FIG-14](#) [DAMPER ASSY\(J\)](#)

[FIG-15](#) [HEAD ASSY-1](#)

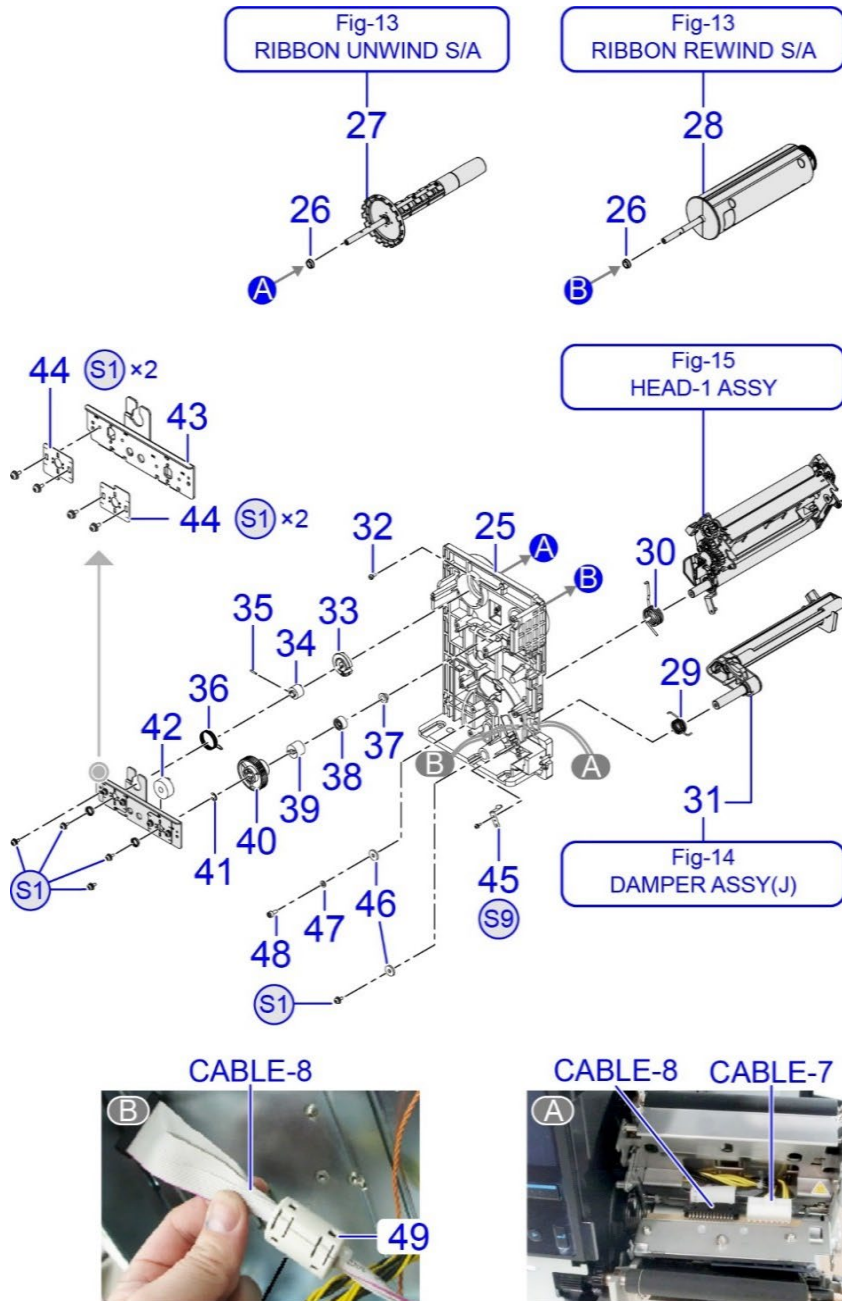
[FIG-16](#) [HEAD ASSY-2](#)

***1: Recommended Spare parts**

MAIN ASSY-2
[TOP](#)


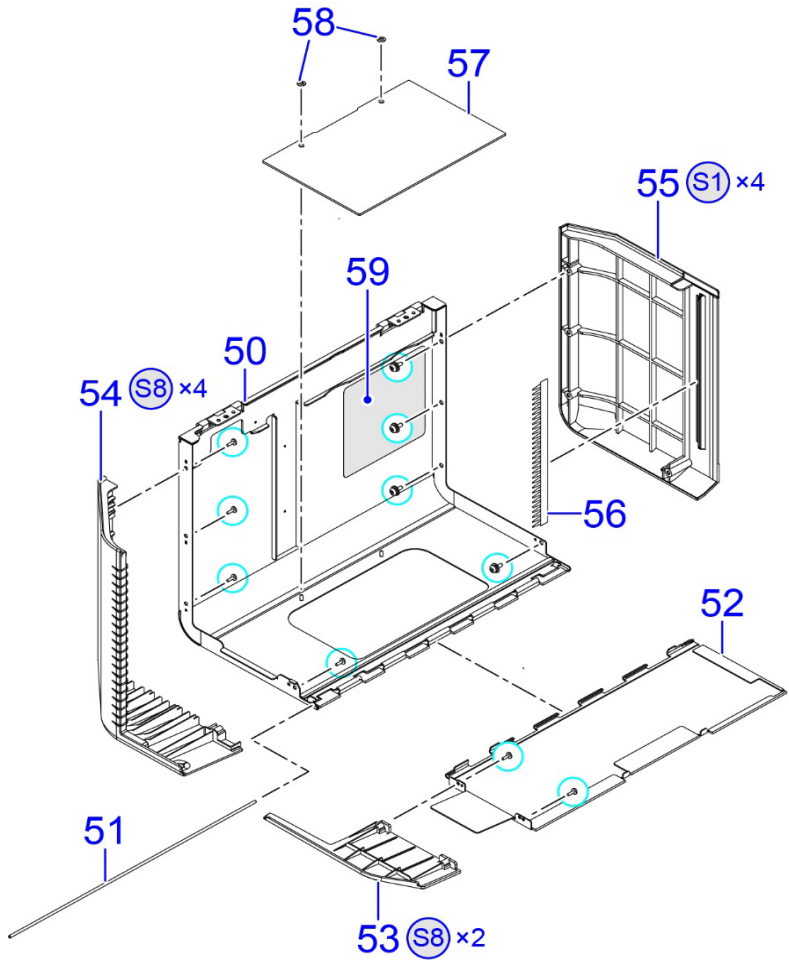
No.	FIRST CODE	DESCRIPTION	NOTE
9	R27582000	COVER LH SET	
S1	MD4401022	PAN HEAD SCREW+SW+WL	
10	P53115000	USB PCB BR	
S7	MD4300621	PAN HEAD SCREW+SW+WL	
11	R28364000	CL4NX USB PCB ASSY -LF	*1
CABLE-1	R28426000	USB HOST CABLE SET-LF	
S7	MD4300621	PAN HEAD SCREW+SW+WL	
12	K00517900	POWER UNIT-LF	*1
CABLE-2	R32197300	POWER SUPPLY CABLE SET-LF	
S9	MD3300822	PAN HEAD SCREW+SW+WS	
13	P53114000	CONT PCB BR	
S6	MD4300821	PAN HEAD SCREW+SW+WL	
14	R38805900	CONTROL PANEL ASSY (PLUS)	Fig-8
CABLE-3	R32514000	KB CABLE (NFC) SET-LF	BT Model
CABLE-4	R33111100	KB CABLE(NON-BT,NFC) SET-LF	Non-BT Model
S8	M16208000	BIND HEAD P TIGHT SCREW	
15	R29788003	GEAR BRACKET ASSY	
S1	MD4401022	PAN HEAD SCREW+SW+WL	
16	PC9730100	SPRING(LOCK)	
Fig-8		CONTROL PANEL ASSY	
Fig-9		CONT PCB ASSY	
S1	MD4401022	PAN HEAD SCREW+SW+WL	
Fig-10		GEAR ASSY	
CABLE-5	R28425000	OPTION CABLE SET-LF	

NOTE *1: Recommended Spare parts

MAIN ASSY-5
[TOP](#)


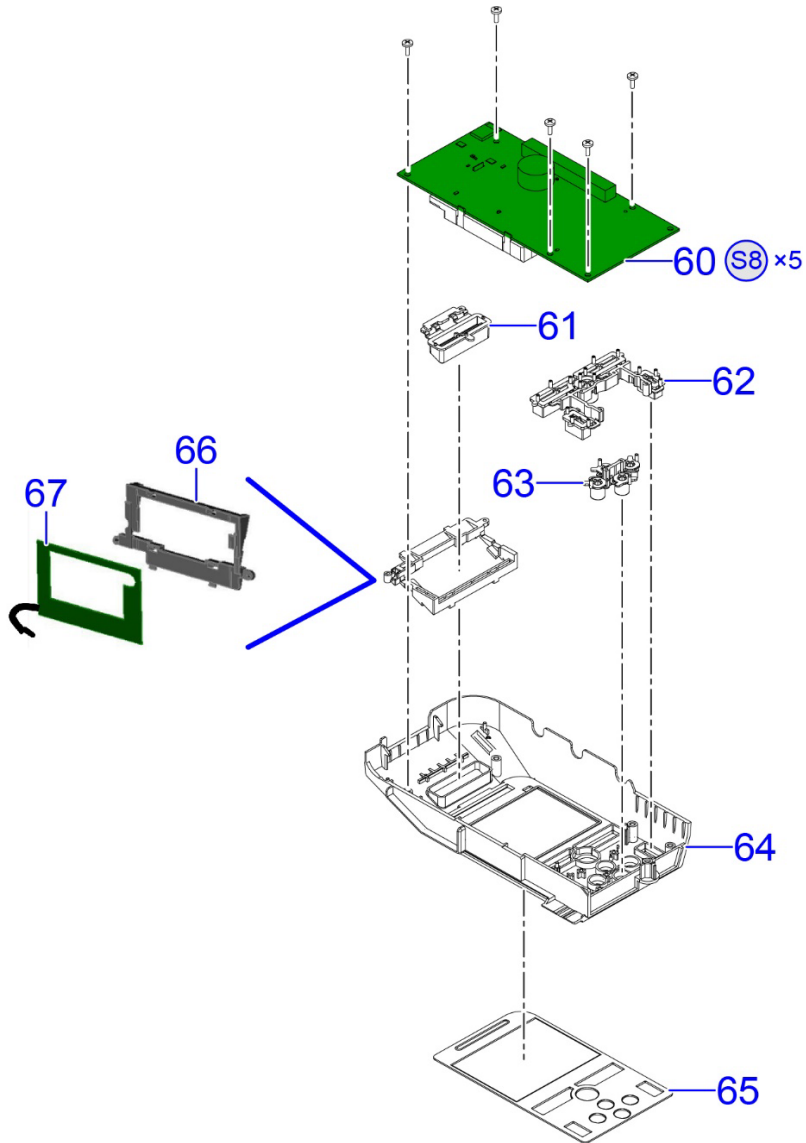
No.	FIRST CODE	DESCRIPTION	NOTE
25	P52952009	CENTER FRAME	
26	PT1112080	BALL BEARING	
27	R32170800	RIBBON UNWIND S/A	Fig-13
28	R32170300	RIBBON REWIND S/A	Fig-13
29	P56209300	SPRING(DAMPER BASE)	
30	P56213100	SPRING(HEAD UP)	
31	R32163504	DAMPER ASSY	Fig-14
32	P53598000	PIN(COVER LH)	
33	P11280010	BF STOPPER	
34	P12267000	TORQUE LIMITER	*1
35	MA0200821	PAN HEAD SCREW	
36	P56412101	BF SPRING	
37	P32582000	BUSH	
38	P11461000	ONEWAY CLUTCH	
39	P56354100	TORQUE LIMITER	*1
40	P52962000	GEAR C(0_6*81)	
41	ND0060030	E SNAP RING	
42	P56344800	ONE-WAY LIMITTER	
43	P56225400	RIBBON FRAME	
44	P56217900	AJ PLATE(RIBBON SH)	
S1	MD4401022	PAN HEAD SCREW+SW+WL	
45	P53139000	SENSOR CASE TENSION	
S9	MD3300822	PAN HEAD SCREW+SW+WS	
46	PA0720100	COLLAR(5*16*2.3)	
47	NB0050022	SPRING WASHER	
48	MN1501030	HEX BOLT	
S1	MD4401022	PAN HEAD SCREW+SW+WL	
CABLE-7	R32114800	HEAD POWER CABLE SET-LF	
CABLE-8	R28428002	HEAD SIGANL CABLE SET-LF	
49	K00396000	FERRITE CORE-LF	
Fig-15		HEAD-1 ASSY	

NOTE *1: Recommended Spare parts

OPEN COVER ASSY
[TOP](#)


No.	FIRST CODE	DESCRIPTION	NOTE
50	R32163400	OPEN COVER TOP SET	
51	P53599000	HINGE PIN(SUB COVER)	
52	P53103000	SUB OPEN COVER	
53	P53111000	SUB REAR OPEN COVER	
S8	M16208000	BIND HEAD P TIGHT SCREW	
54	P56208300	REAR OPEN COVER	
S8	M16208000	BIND HEAD P TIGHT SCREW	
55	P56176600	FRONT COVER TOP	
S1	MD4401022	PAN HEAD SCREW+SW+WL	
56	P56231500	SHEET(THUNDER)W176	
57	P53097000	WINDOW	
58	MV8300030	PUSH NUT	
59	Q04253000	ROUTE STICKER	

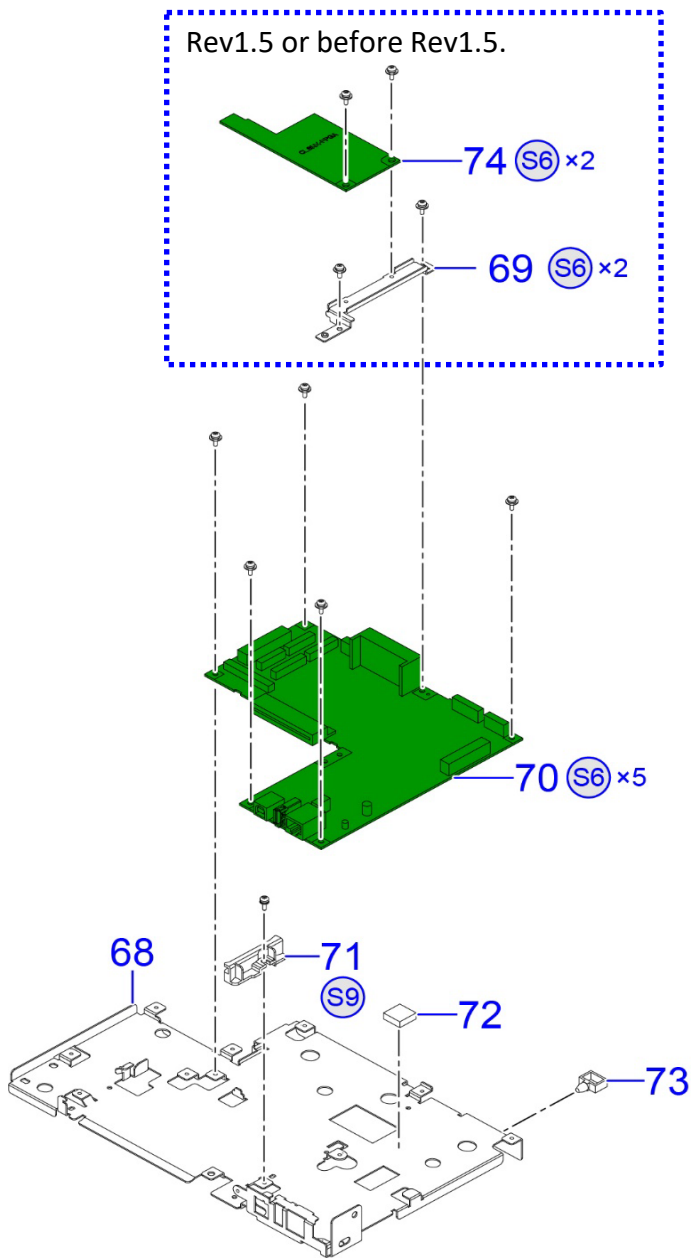
NOTE *1: Recommended Spare parts

CONTROL PANEL ASSY
[TOP](#)


No.	FIRST CODE	DESCRIPTION	NOTE
60-1	R32707300	CLNX KB PCB ASSY	BT model
60-2	R44455100	CLNX KB PCB ASSY(Non BT)	NonBT model
S8	M16208000	BIND HEAD P TIGHT SCREW	
61	P53112000	POWER KEY	
62	R29019000	CONT KEY TOP(SILK)	
63	R29808000	CONT KEY UNDER(SILK)	
64	R38747400	CONT FRAME(SILK)	
65	P53118000	CONT FRAME SHEET	
66	P56579900	NFC ANTENNA HOLDER	
67	R32706600	CLNX-NFC ANT ASSY	

NOTE *1: Recommended Spare parts

CONT PCB ASSY

[TOP](#)


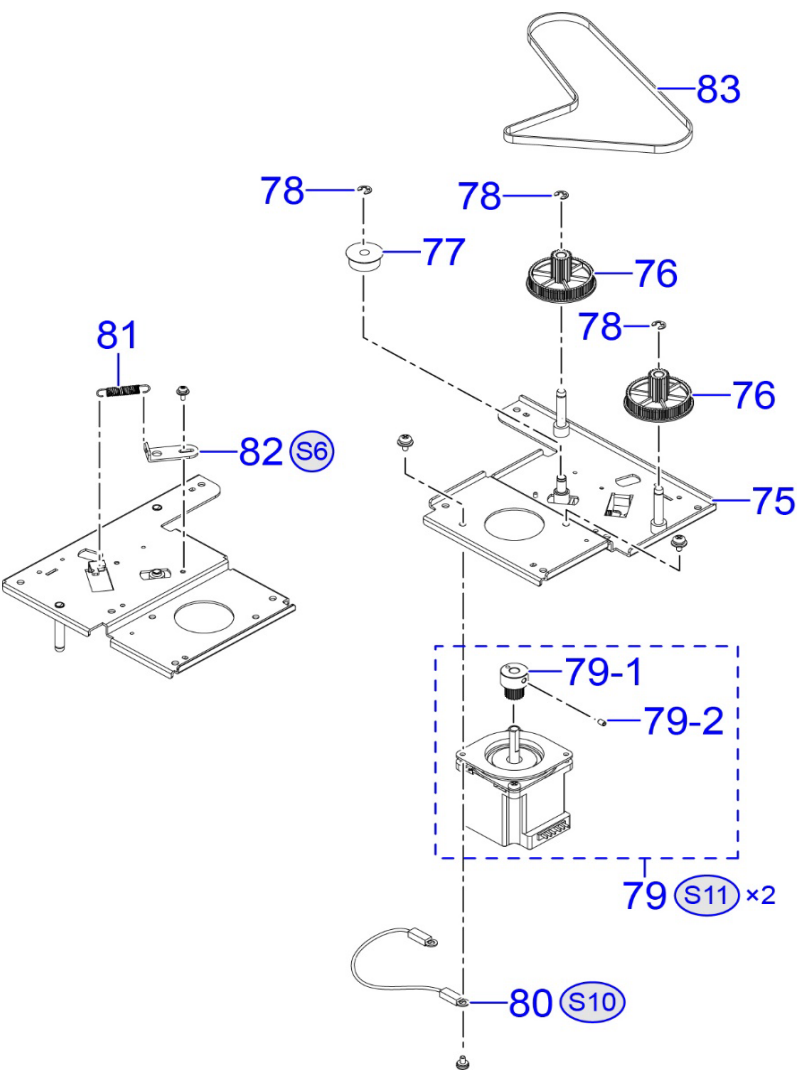
No.	FIRST CODE	DESCRIPTION	NOTE
68	P52979000	MAIN PCB BR	
69	P56209703	MAIN PCB SUB BR	Rev1.5 or before Rev1.5
S6	MD4300821	PAN HEAD SCREW+SW+WL	
70	R48849300	CLNX-CONT-S PCB ASSY-LF (PLUS)	*1 Global
70	R48849500	CLNX-CONT-S PCB ASSY-LF (PLUS,EX1)	*1 EX1
70	R48849700	CLNX-CONT-S PCB ASSY-LF (PLUS,JP)	*1 Japan
S6	MD4300821	PAN HEAD SCREW+SW+WL	
71	P52981000	I/F GUIDE RAIL	
S9	MD3300822	PAN HEAD SCREW+SW+WS	
72	P55724000	HEAT CONDUCTING PAD	
73	P54964000	CABLE SADDLE	
74	R32262405	CLNX-FPGA PCB ASSY-LF	*1 Rev1.5 or before Rev1.5
S6	MD4300821	PAN HEAD SCREW+SW+WL	

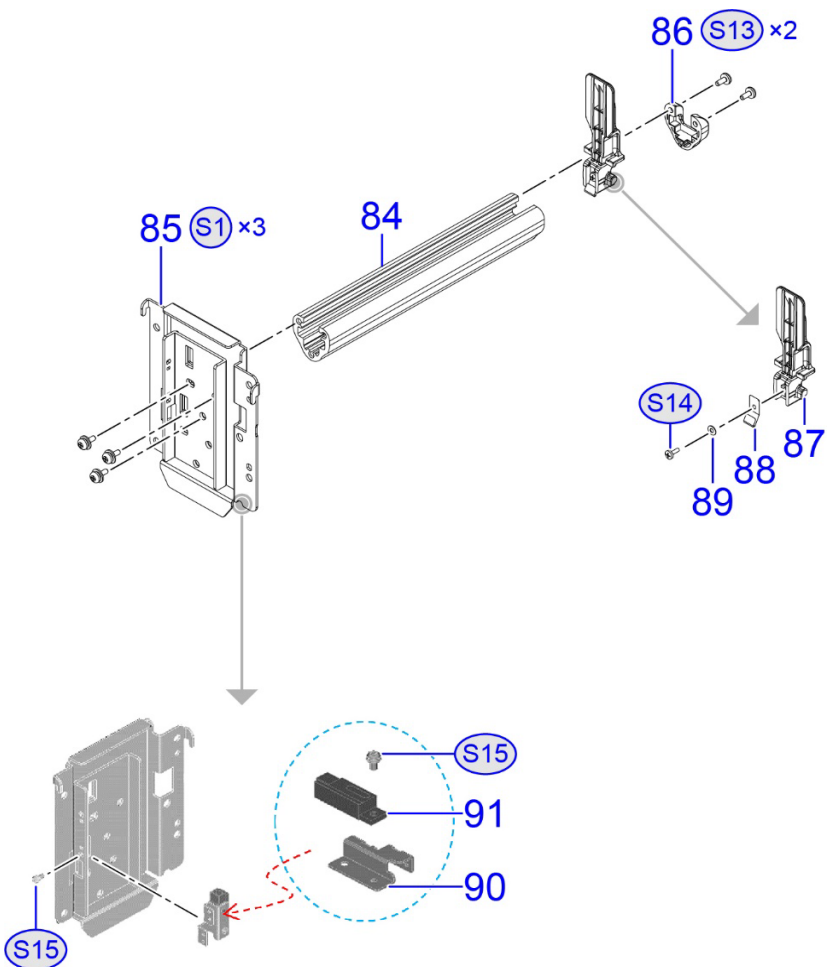
NOTE *1: Recommended Spare parts

GEAR ASSY
[TOP](#)

No.	FIRST CODE	DESCRIPTION	NOTE
75	R27637000	GEAR FRAME SET	
76	P52963000	GEAR/PULLEY(0_6*20/67)	
77	P44208000	TENSION ROLLER	
78	ND0040022	E SNAP RING	
79	R29789001	MOTOR S/A	
79-1	P53646000	MO PULLEY	
79-2	MJ1400524	HEX SOCKET SET SCREW(W-POINT)	
S11	MD4400822	PAN HEAD SCREW+SW+WL	
80	R13541001	FG CABLE-195 SET-LF	
S10	MD0400622	PAN HEAD SCREW-LF	
81	P53618000	SPRING(IDOLE)	
82	R27442000	TENSION BR SET	
S6	MD4300821	PAN HEAD SCREW+SW+WL	
83	P53988000	TIMING BELT	*1

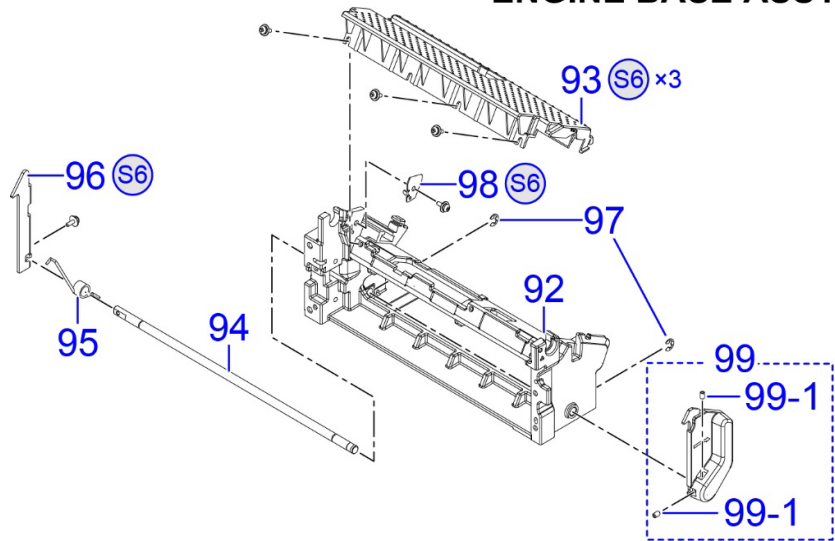
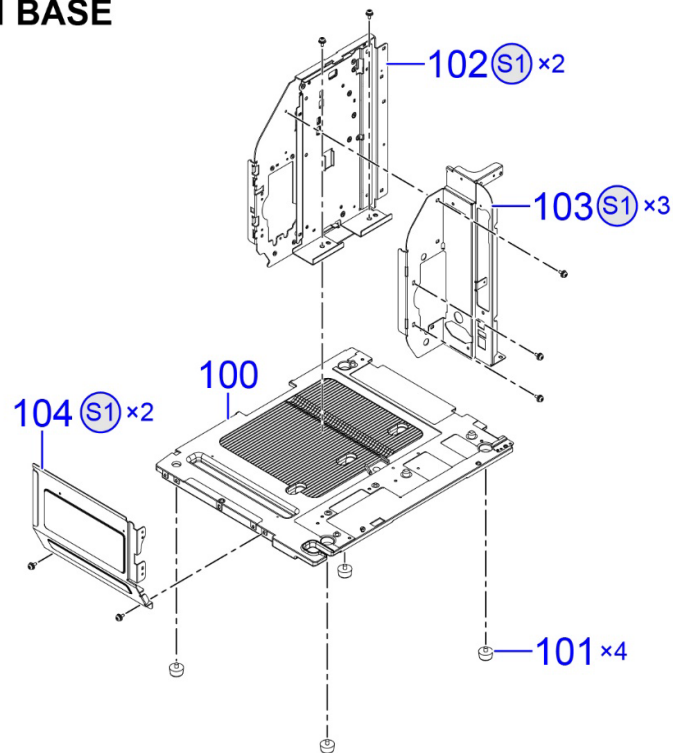
NOTE *1: Recommended Spare parts



LABEL HOLDER ASSY
[TOP](#)


No.	FIRST CODE	DESCRIPTION	NOTE
84	P56209400	LABEL HOLDER	
85	R30543003	LABEL HOLDER SUPPORT SET	
S1	MD4401022	PAN HEAD SCREW+SW+WL	
86	P53125000	LABEL HOLDER CAP	
S13	MA0400822	PAN HEAD SCREW	
87	P53122002	LABEL HOLDER GUIDE RH	
88	P56483100	LABEL HOLDER GUIDE RH SP	
89	NA1030022	PLAIN WASHER	
S14	MH0300821	PAN HEAD P TIGHT SCREW	
90	P56500601	LABEL SENSOR BR	
S15	MD3300621	PAN HEAD SCREW+SW+WS	
91	F05171900	PHOTO INTERRUPTER-LF	
S15	MD3300621	PAN HEAD SCREW+SW+WS	

NOTE *1: Recommended Spare parts

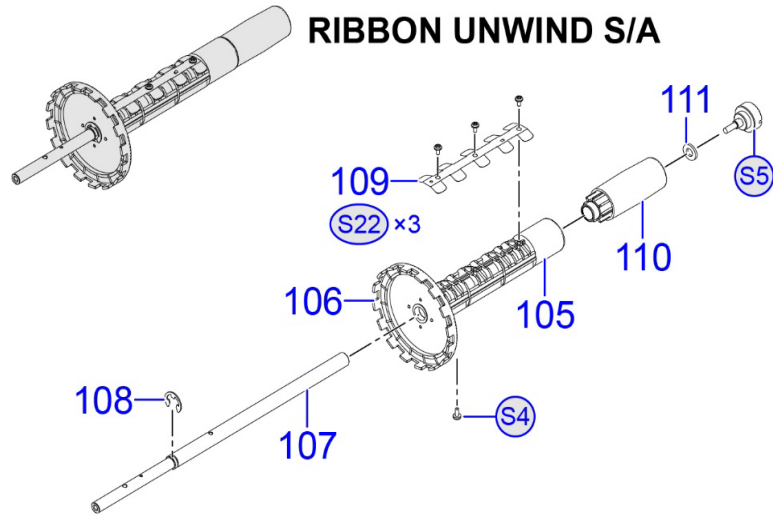
ENGINE BASE ASSY
[TOP](#)
ENGINE BASE ASSY

MAIN BASE


No.	FIRST CODE	DESCRIPTION	NOTE
92	P61475903	ENGINE FRAME SRA	
93	P56210100	MEDIA GUARD	
S6	MD4300821	PAN HEAD SCREW+SW+WL	
94	P56210000	SHAFT(HOOK)	
95	P53616000	SPRING(HOOK)	
96	P52954000	HEAD LOCK PLATE LH	
S6	MD4300821	PAN HEAD SCREW+SW+WL	
97	ND0040022	E SNAP RING	
98	P52973000	LABEL GUIDE LH(F)	
S6	MD4300821	PAN HEAD SCREW+SW+WL	
99	R30541000	HEAD LOCK ASSY	
99-1	MJ1400524	HEX SOCKET SET SCREW(W-POINT)	

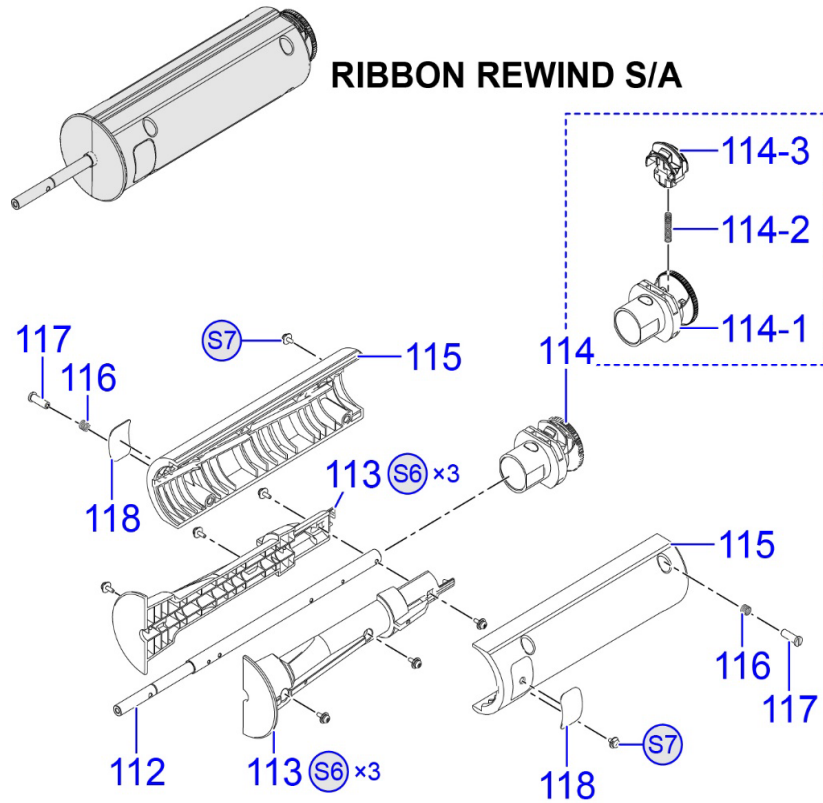
MAIN BASE

100	P56176803	BASE FRAME	
101	P11522000	CASE LEG	
102	R32356301	CENTER PLATE SET	
S1	MD4401022	PAN HEAD SCREW+SW+WL	
103	R32285303	REAR PANEL LH(SILK)	
S1	MD4401022	PAN HEAD SCREW+SW+WL	
104	P56225001	REAR PANEL RH	
S1	MD4401022	PAN HEAD SCREW+SW+WL	

NOTE *1: Recommended Spare parts

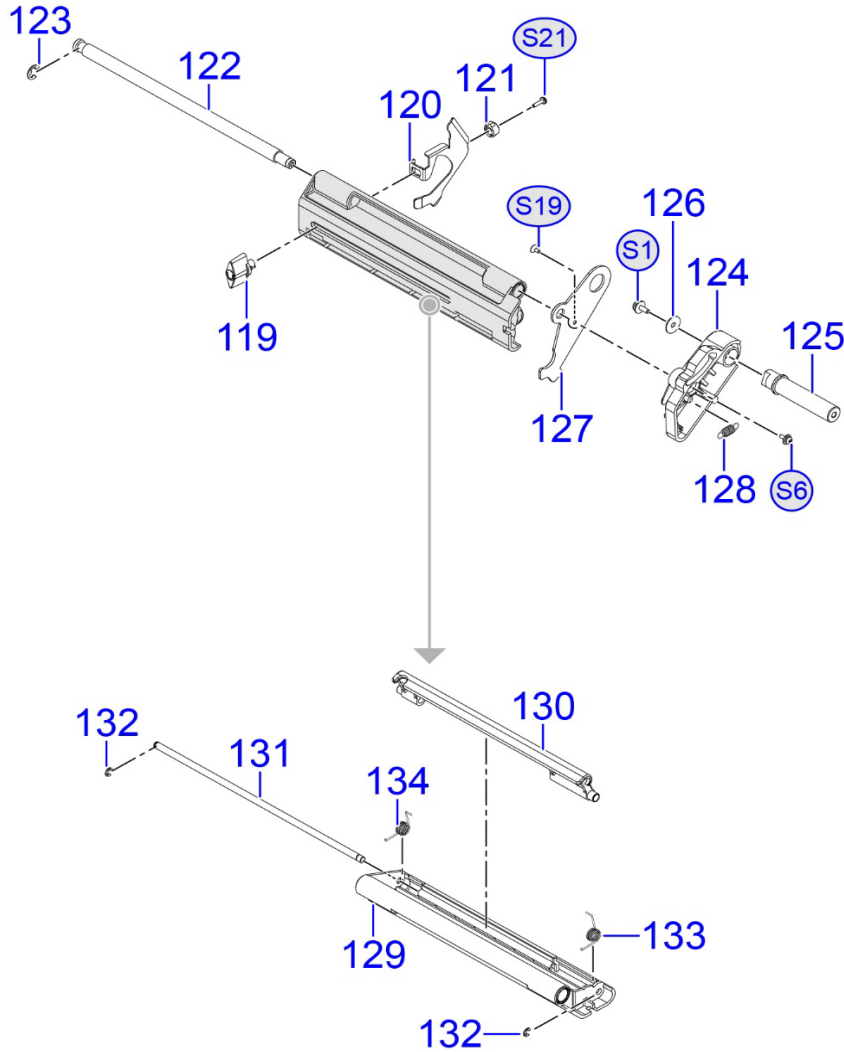
RIBBON UNWIND S/A
[TOP](#)


No.	FIRST CODE	DESCRIPTION	NOTE
105	P53006000	RIBBON BOSS	
S4	MA0300621	PAN HEAD SCREW	
106	P53005000	DISK PLATE	
107	P56213601	SHAFT(RIBBON BOSS)	
108	ND0080022	E-SNAP RING	
109	P00626000	SPRING(RIBBON BOSS)	
S22	MH0300522	PAN HEAD P TIGHT SCREW	
110	P56226001	RIBBON BOSS CAP	
111	NB0060022	SPRING WASHER	
S5	P53642000	RIBBON BOSS SCREW	


RIBBON REWIND S/A

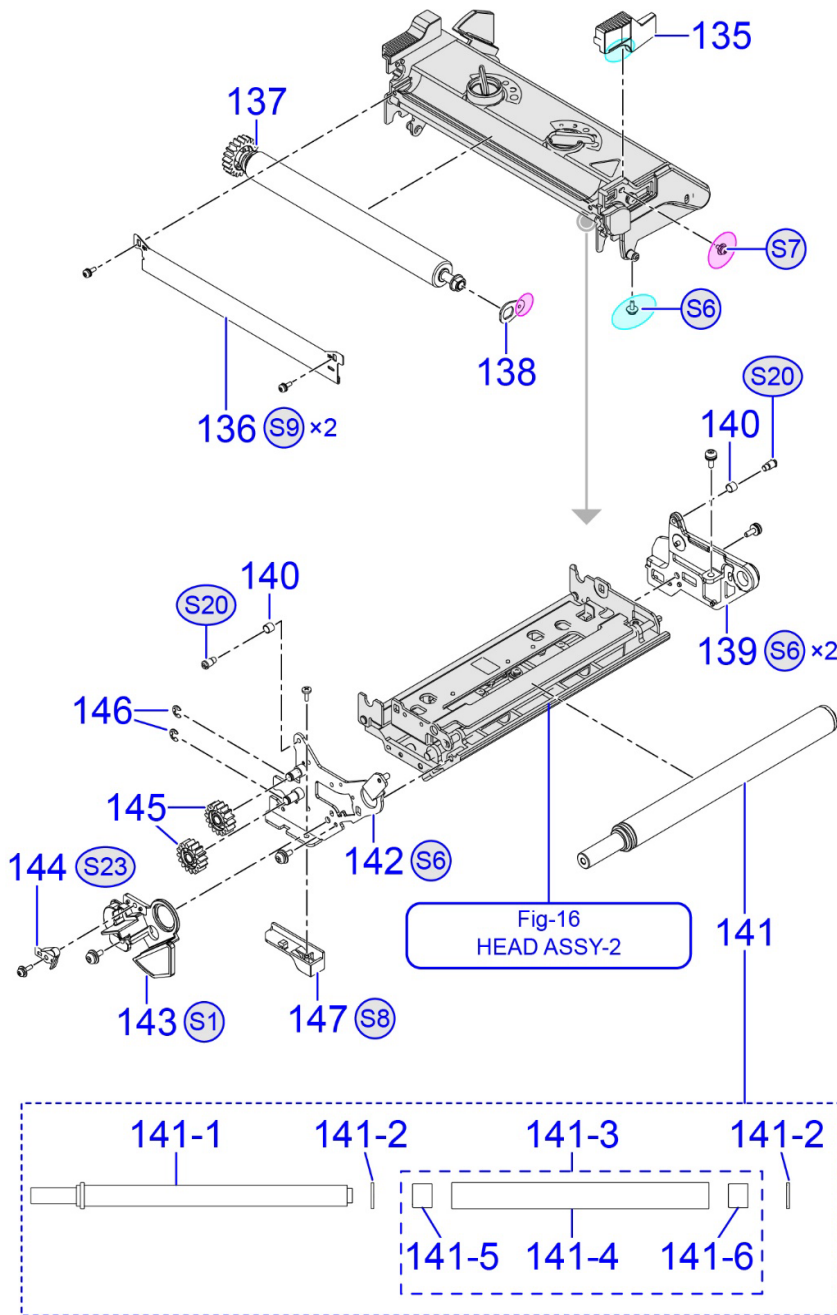
112	P56213201	SHAFT(RIBBON CORE)	
113	P56213302	RIBBON CORE-IN	
S6	MD4300821	PAN HEAD SCREW+SW+WL	
114	R29805000	RELEASE BUTTON S/A	
114-1	P53002000	RELEASE BUTTON COVER	
114-2	P53644000	RIBBON RELEASE SPRING	
114-3	P53001000	RELEASE BUTTON	
115	R32170500	RIBBON CORE (A) S/A	
116	P40494000	SPRING(SLIDE)	
117	P40495000	SHAFT(SLIDE)	
118	P37081000	GRIP SHEET	
S7	MD4300621	PAN HEAD SCREW+SW+WL	

NOTE *1: Recommended Spare parts

DAMPER ASSY(J)
[TOP](#)


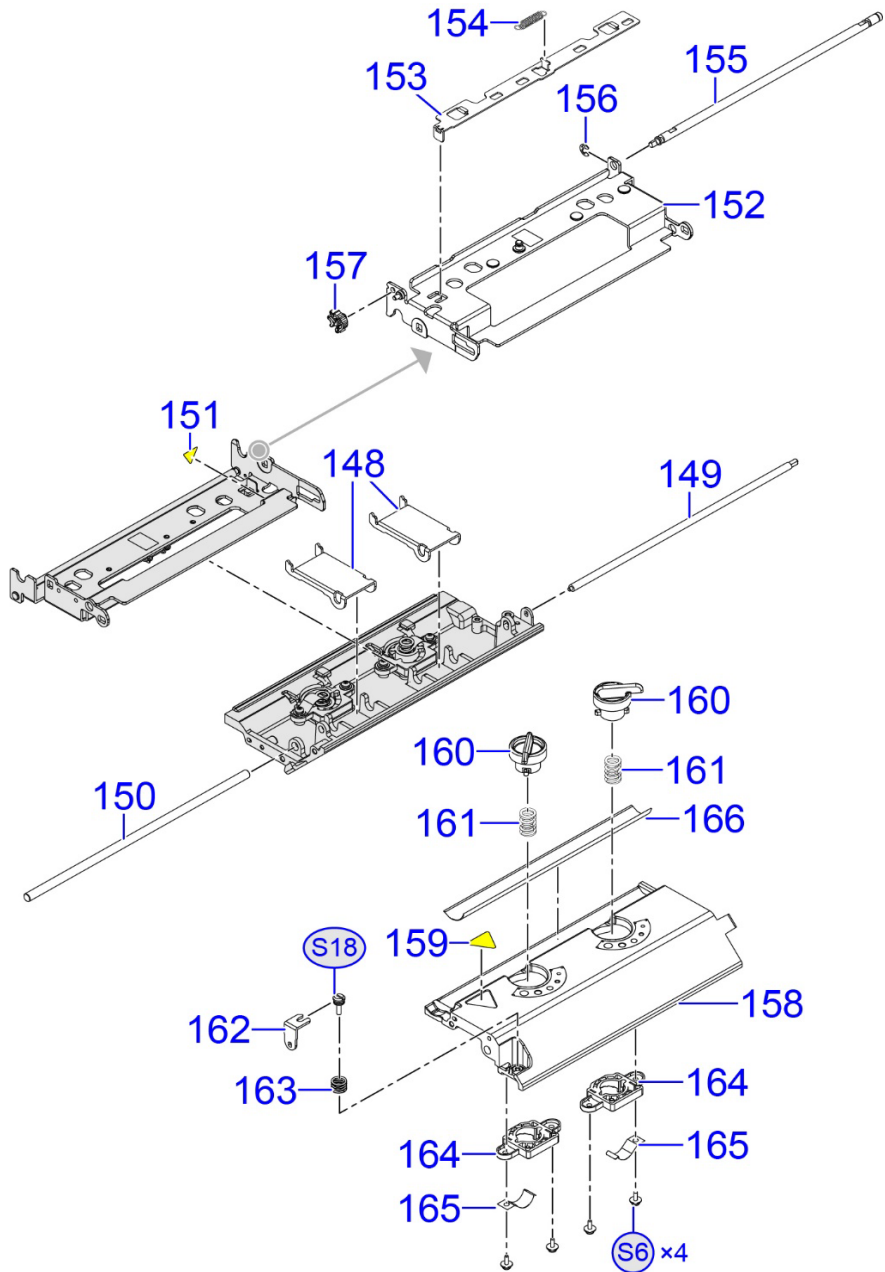
No.	FIRST CODE	DESCRIPTION	NOTE
119	P53121000	LABEL GUIDE LEVER	
120	P60988001	LABEL GUIDE RH WIDE6	
121	P53123000	LABEL GUIDE STOPPER	
S21	MH0301021	PAN HEAD P TIGHT SCREW	
122	P56208500	SHAFT(DAMPER A)	
123	ND0060030	E SNAP RING	
124	P52970000	DAMPER BASE	
S6	MD4300821	PAN HEAD SCREW+SW+WL	
125	P53638000	SHAFT(DAMPER BASE)	
126	PA0730320	WASHER (4.2*14*1)	
S1	MD4401022	PAN HEAD SCREW+SW+WL	
127	P56208700	LABEL GUIDE LH(DAMPER)	
S19	MA1300622	FLAT HEAD SCREW	
128	P56209201	SPRING(DAMPER A)	
129	P56208800	DAMPER HOLDER TOP	
130	P56209000	DAMPER HOLDER UNDER	
131	P56208600	SHAFT(DAMPER B)	
132	ND0030030	E SNAP RING	
133	P56208901	SPRING(DAMPER B RH)	
134	P56209101	SPRING(DAMPER B LH)	

NOTE *1: Recommended Spare parts

HEAD ASSY-1
[TOP](#)


No.	FIRST CODE	DESCRIPTION	NOTE
135	P52984000	HEAD CLOSE LEVER	
S6	MD4300821	PAN HEAD SCREW+SW+WL	
136	P56213001	AJ PLATE(RIBBON)	
S9	MD3300822	PAN HEAD SCREW+SW+WS	
137	R32170100	RIBBON ROLLER S/A	
138	P52988000	AJ PLATE(RIBBON ROLLER)	
S7	MD4300621	PAN HEAD SCREW+SW+WL	
139	P52966000	HEAD FRAME RH	
S6	MD4300821	PAN HEAD SCREW+SW+WL	
140	P41929000	COLLAR(5*6*4.8)	
S20	P53625000	HEAD LOCK SCREW	
141	R38821100	HEAD SHAFT S/A	
141-1	P61654100	SHAFT(HEAD)	
141-2	P61084102	ROLLER SPACER	
141-3	R38821200	RIBBON PIPE S/A	
141-4	P61654200	RIBBON PIPE	
141-5	P61084200	DRY METAL	
141-6	P03856000	OILES BEARING	
142	R27444000	HEAD FRAME LH SET	
S6	MD4300821	PAN HEAD SCREW+SW+WL	
143	P56212705	HEAD HARNESS COVER	
144	P52987000	SENSOR HOLD SP	
S23	MD4301022	PAN HEAD SCREW+SW+WL	
145	P52989000	GEAR H(1_25*16)	
146	ND0040022	E SNAP RING	
147	P56349001	HEAD CLOSE LEVER LH	
S8	M16208000	BIND HEAD P TIGHT SCREW	
Fig-16		HEAD ASSY-2	

NOTE *1: Recommended Spare parts

HEAD ASSY-2
[TOP](#)


No.	FIRST CODE	DESCRIPTION	NOTE
148	P56217800	HEAD PRESSURE ARM	
149	P56212400	SHAFT(ARM)	
150	P56212600	SHAFT(HEAD BASE)	
151	QC6524200	STICKER(CAUTION HOT)	
152	R32165400	HEAD BASE PLATE SET	
153	P56211000	RELEASE PLATE	
154	P56310900	SPRING(RELEASE)	
155	P56211100	SHAFT(HEAD AJ)	
156	ND0040022	E SNAP RING	
157	P52999000	HEAD_AJ_KNOB	
158	P56177002	HEAD FRAME	
159	Q04255000	STICKER(CAUTION)	
160	P52982000	HEAD PRESSURE KNOB	
161	P56240700	SPRING(HEAD)	
162	P52991000	AJ PLATE(HEAD)	
163	P53626000	SPRING(HEAD AJ)	
S18	P53627000	HEAD AJ SCREW	
164	P56212501	HEAD PRESSURE	
165	K00533900	FINGER	
S6	MD4300821	PAN HEAD SCREW+SW+WL	
166	P56412201	SHEET(RIBBON ROLLER)	

NOTE *1: Recommended Spare parts

Date	Item NO	Note	RV
2020/12/14		一部Non Plusと共通部品について、Non Plusのファーストコード表記と同じするため修正実施	r01
2022/1/28		CLNX-CONT-S PCB ASSY-LF (PLUS)/R37911104 → R44681100	r02
2022/1/28		CLNX-CONT-S PCB ASSY-LF (PLUS,EX1)/R38285104 → R44921300	r02
2022/1/28		CLNX-CONT-S PCB ASSY-LF (PLUS,JP)/R40385103 → R44921400	r02
2023/5/11		Add to No.70 R48849300,R48849500,R48849700 CONT PCB Rev1.7	r03
2023/5/23		Fig6 Swap 29 and 30	r04
2023/6/22		CLNX KB PCB ASSY R32707300→R44455100(Non BT)	r05
2023/6/22		CLNX KB PCB SUB ASSY R32707200→R44455200(Non BT)	r05
2023/8/10		Add to CLNX KB PCB ASSY R32707300(BT Model)	r06
2023/8/10		Del to CLNX KB PCB SUB ASSY R44455200(Non BT)	r06
2023/12/5		Del to CLNX-CONT-S PCB ASSY-LF Rev.1.5 and 1.6S	r07