

SETUP GUIDE WPCPlus Network Interface

1 Introduction

- This document describes the steps for installing and configuring a SATO Network interface in a Windows environment. Refer to the manual contained in the CD-ROM for more details.
- This Set Up Guide is for Windows users.
- If you intend to use a SATO Network interface in UNIX/Linux, Netware or Macintosh environments, please refer to the manual contained in the CD-ROM.

2 Initial Installation & Configuration

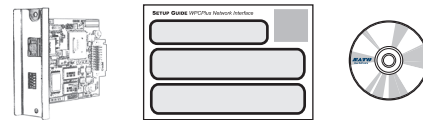
For Administrators

1. Install the SATO Network interface card into the printer
2. Connect the SATO Network interface to the network
3. Configure the SATO Network interface card
4. Install ST-Print2003 (Windows LPR printing only)
5. Setup the printer port

For Clients

1. Install ST-Print2003 (Windows LPR printing only)
2. Setup the printer port

3 Package Contents



Please verify that the following are contained in the package.

- SATO EEA
- Setup Guide
- CD-ROM User Software (Including configuration utility and Users Manual)
- Mounting Hardware

4 Connect SATO Network Interface to the Printer

1. Turn off the printer power and unplug the power cable.
2. Remove the 2 screws securing the existing port to the back of the printer.
3. Remove the existing port by pulling slowly outward.
4. Slide in the SATO Network Interface and secure the port with the 2 thumbscrews attached to the port.
5. Print a self-test page:
 - a. With the printer's power off, turn DSW3 on the network interface card to the on position.
 - b. Power on the printer.
 - c. The printer should now print a test page.
6. If successful, power the printer off and return DSW3 to the down position. You are now ready to go to Step 5. If unsuccessful reset the Network Interface by turning the printer off and then turning on DSW2 on the adapter, then go back to step 2.
7. If still unsuccessful contact SATO support at 704-644-1660 or by e-mail at: techsupport@satoamerica.com.

5 Connect to the network

1. Ensure that the printer's power is turned off (failure to do so may result in damage to the Network Interface card) and insert an Ethernet cable into the Network Interface card.
2. Plug the other end of the Ethernet cable into your network connection.
3. Turn the printer on.

6 Starting User Software

- * Reference Network Environment:
 - a) DHCP server environment
 - b) The printer driver is already installed in the PC.
- * Explains how to configure SATO Network interface using **Quick Setup**.
- * For advanced configuration or to change the configuration, refer to "Chapter 8" of the Users Manual.
- * The screen displayed may vary depending on the Windows™ operating environment.

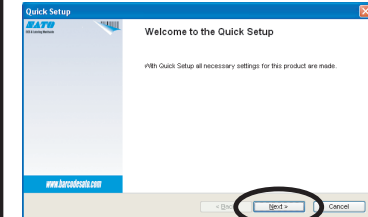
1. Please insert the CD-ROM **User Software** into the CD-ROM drive of your Windows PC.
 - * If the "Main menu" screen does not appear automatically, execute "run.exe" in the CD-ROM drive.



2. Press **Quickset Utility**.

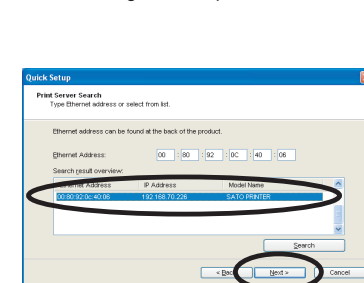
7 Quick Setup

1. The Quick Setup starts. Press **Next**.

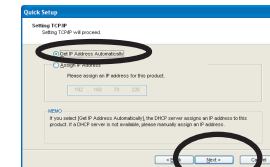


2. The **Software License Agreement** will appear. Press **Yes** if you accept the contents.

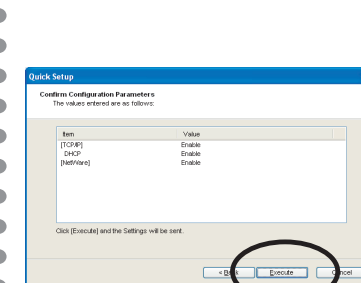
3. Select the SATO Network interface you want to configure, then press **Next**.



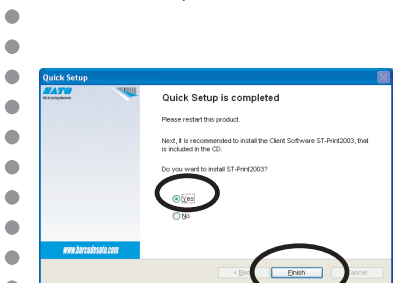
4. To assign an IP address to the SATO Network interface automatically, select **Get IP Address Automatically**, then press **Next**.
 - * If you want to assign an IP address manually, select **Assign IP Address**, then type in the appropriate IP address.



5. Verify the configuration parameters, then click **Execute**.



6. Configuration is complete. Select **Yes**, then press **Finish**.



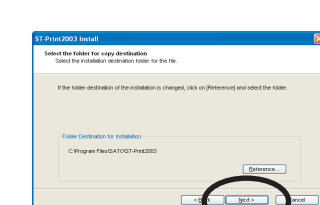
8 ST-Print2003 Installation

The ST-Print2003 installation allows printing using LPR. If you want to print using a different method, please refer to the SATO Network interface manual.

1. From the main CD menu, select **IP Port Drivers**. The ST-Print2003 installer starts. Press **Next**.

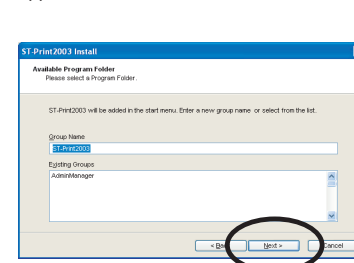
2. The **Software License Agreement** will appear. Press **Yes** if you accept the contents.

3. The **Select the folder for copy destination** will appear. Press **Next**.

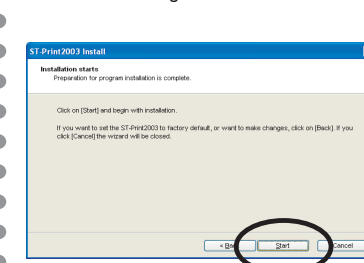


ST-Print2003 Installation starts.

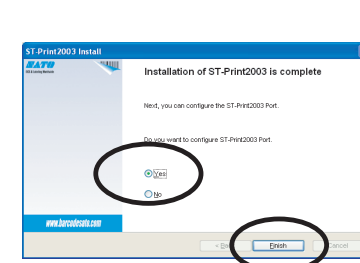
4. The **Available Program Folder** will appear. Press **Next**.



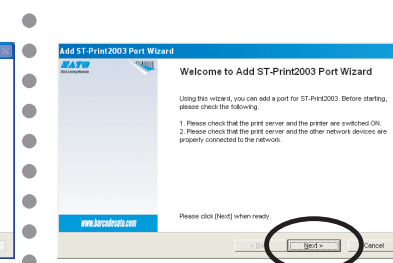
5. Press **Start** and the ST-Print2003 installation will begin.



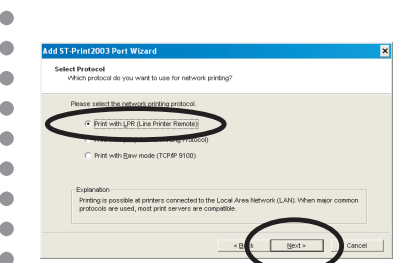
6. Select **Yes**, then press **Finish**.



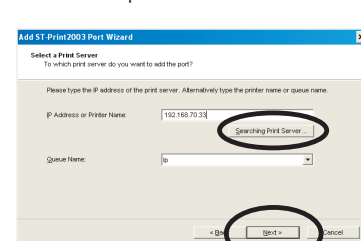
7. The **Add ST-Print2003** appears. Press **Next**.



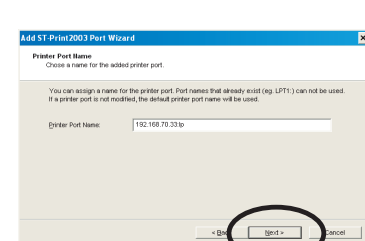
8. Select **Print with LPR**, then press **Next**.



9. Press **Searching Print Server**, then select the appropriate SATO Network interface and press **Next**.



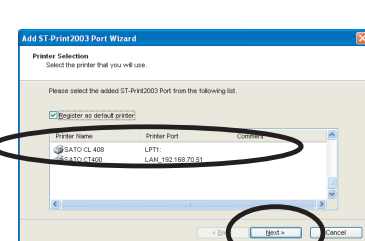
10. Assign the **Printer Port Name**. Press **Next**.



11. Press **Finish** and the port addition is complete.



12. Select the printer that uses the newly added port. Press **Next**.



13. The Port configuration is complete. Press **Finish**.



9 User Registration

- Please complete the User Registration via our web page after completing the SATO Network interface setup. User Registration is used by SATO to improve product support and services.

- For any technical questions, © 2009 Sato America, Inc. All rights reserved. P/N: 9001205(A)

E-mail : techsupport@satoamerica.com
URL : http://www.satoamerica.com/