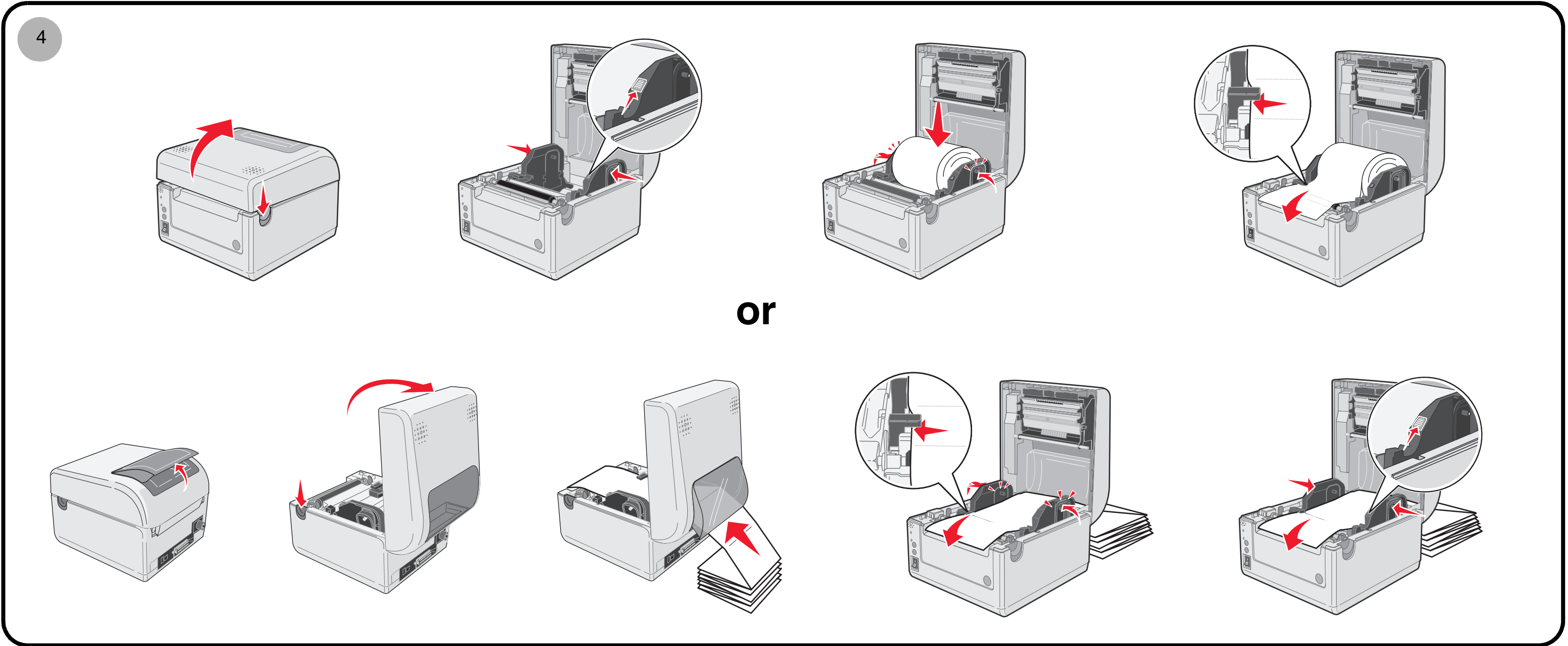
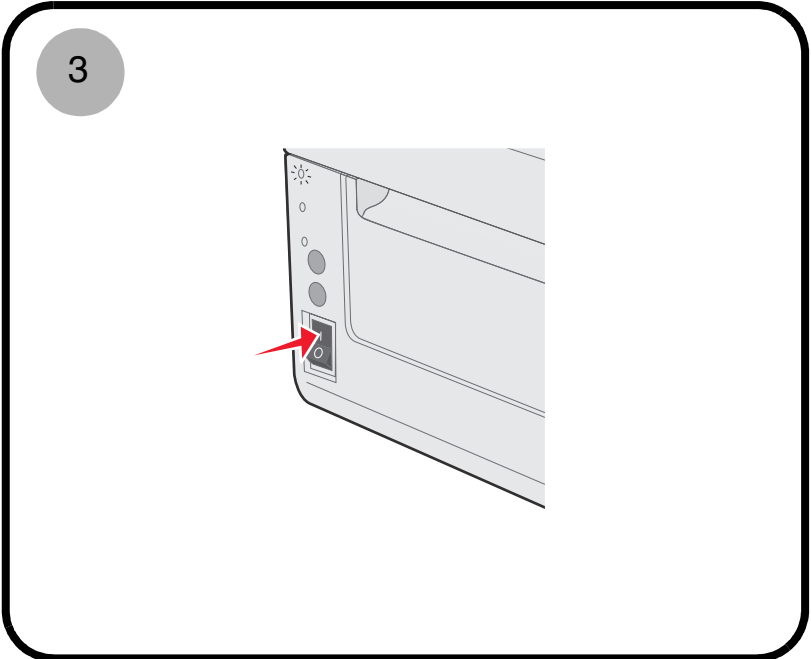
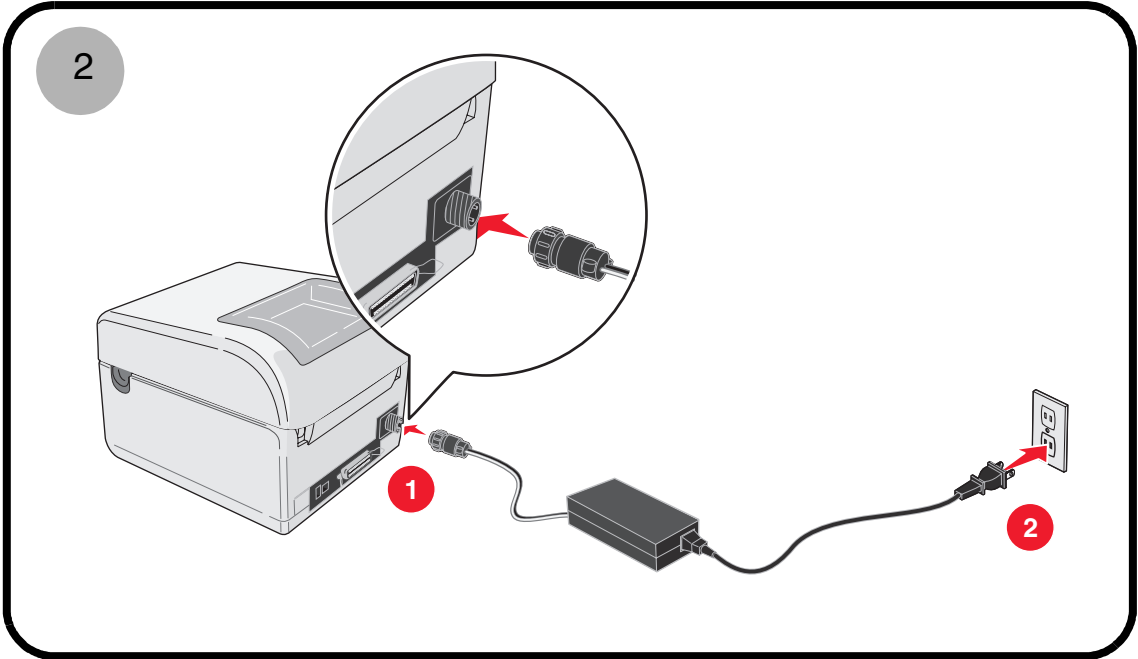
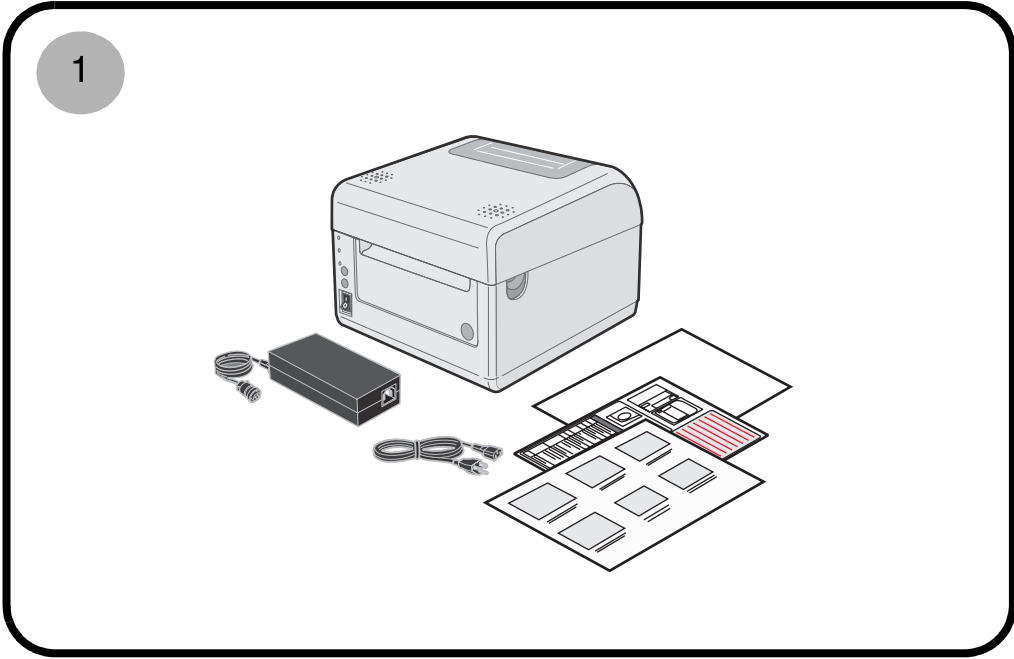
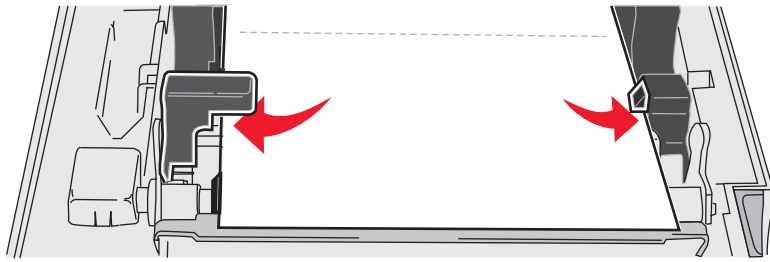


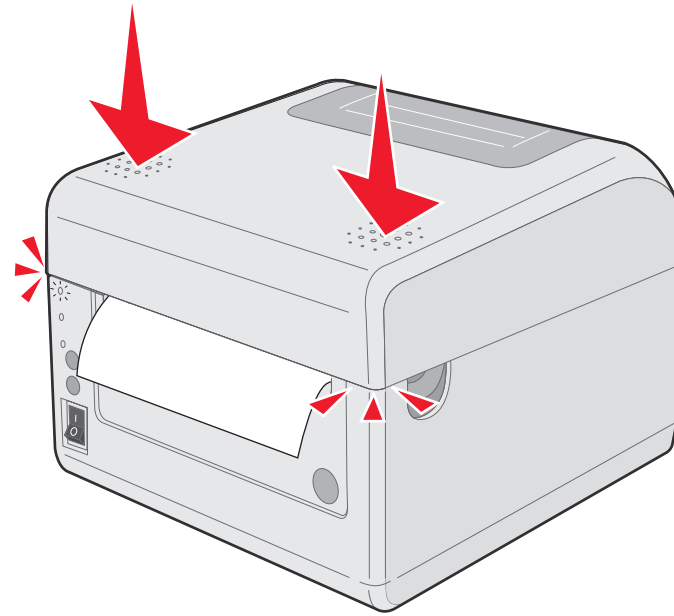
Setup



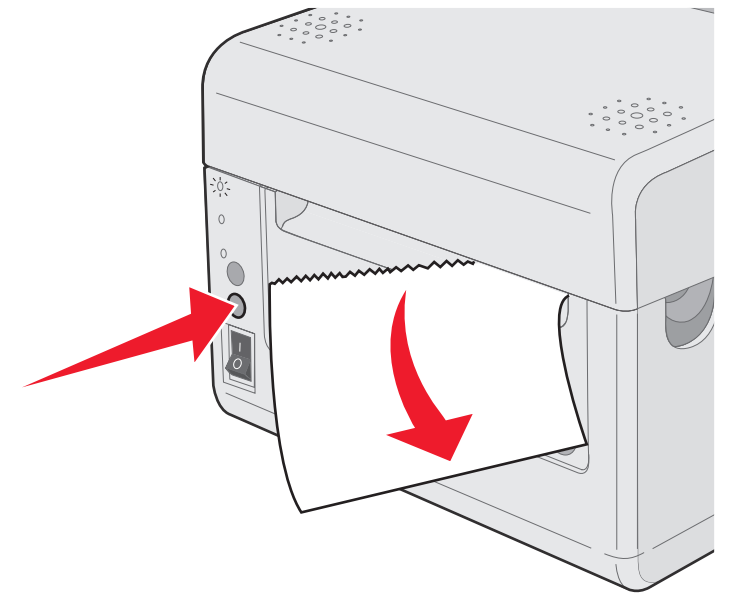
5



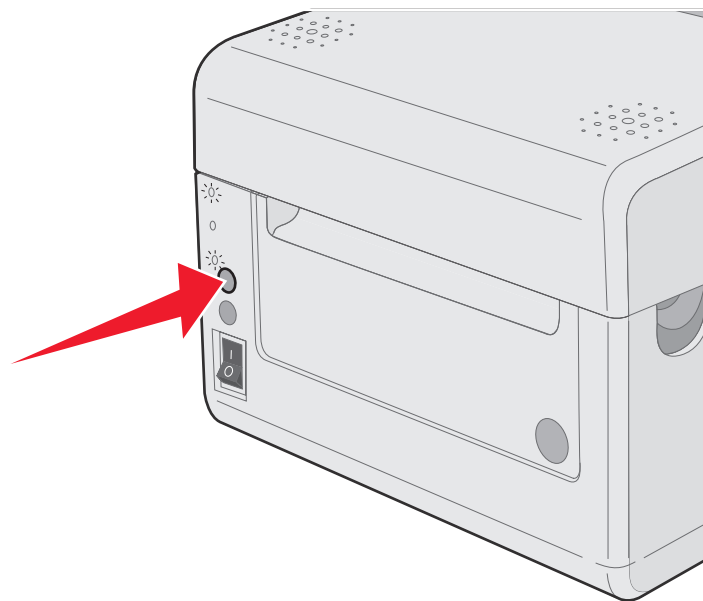
6



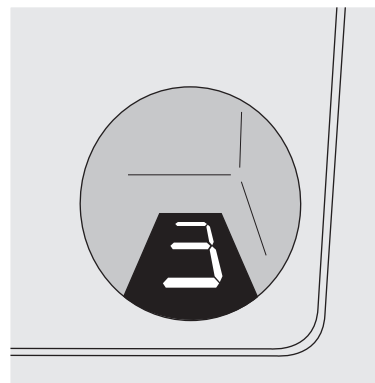
7



8



9



Error No.	Problem	Remedy
0	Flash memory overflowing	Contact the place where you bought the printer.
2	PCB hardware failure	Contact the place where you bought the printer.
3	EEPROM failure	Contact the place where you bought the printer.
4	Physical damage on the printhead	Contact the place where you bought the printer.
5	Loose printhead	Close the top cover until it firmly latches.
6	Running out of media	Load a new roll of labels.
7	Incorrect sensor selection or sensitivity setting	Contact the place where you bought the printer.
8	Cutter disconnected or cutter failure while in cutter mode	Contact the place where you bought the printer.
8.	Flash ROM read error	Contact the place where you bought the printer.
A	Data overflowing	Press the power button to turn off the printer. Press the power button again to turn on the printer. Reprint the labels.
B, C, D	Wrong setting of data transmission between the computer and the printer. (This error is applicable only when RS-232C I/F is used.)	Check the data transmission settings, or contact the place where you bought the printer for appropriate settings such as baud-rate, parity, and Data/Stop bit.