



# RFID Printing via BEA WebLogic® RFID Edge Server (.NET Version)

# Software License Agreement

PLEASE READ THE FOLLOWING TERMS AND CONDITIONS BEFORE USING THIS PRODUCT. BY INSTALLING THE PRODUCT YOU THEREBY INDICATE YOUR ACCEPTANCE OF THESE TERMS AND CONDITIONS. SHOULD YOU DISAGREE WITH ANY OF THE TERMS OR CONDITIONS LISTED BELOW, PROMPTLY REMOVE ALL FILES RELATED TO THIS PRODUCT FROM YOUR HOST PLATFORM AND RETURN THE PRODUCT TO SATO CORPORATION.

1. You explicitly agree to accept a non-exclusive license to use the Software identified on the distribution media solely for your own customary business or personal purposes. Your local and national laws govern this Agreement.
2. Henceforth, "Software" shall refer to the digitally encoded, machine-readable data and program. The term "Software Product" includes the Software identified on the distribution media, including any accompanying documentation. The term "Distribution Media" refers to any method by which the Software Product is delivered to the end user, including but not limited to Floppy Disks, CD-ROM, Magnetic Tape and On-Line distribution via the Internet. The Software Product is licensed (not sold) to you, and SATO® either owns or licenses from other vendors who own all copyright, trade secret, patent and other proprietary rights in the Software Product.
3. To protect the proprietary rights of SATO Corporation, you agree to maintain the Software Product and other proprietary information concerning the Software Product in strict confidence and to establish reasonable procedures regulating access to and use of the software.
4. You agree not to duplicate or copy the Software except that you may make one backup copy. You agree that any such copy shall contain the same proprietary notices as those appearing on the original.
5. You shall not sub-license, sell, lease, or otherwise transfer all or any portion of the Software Product separate from the printer(s), without the prior written consent of SATO Corporation.
6. You may not modify or prepare derivative works of the Software Product. You may not transmit the Software Product over a network, by telephone, or electronically using any means; or reverse engineer, decompile or disassemble the Software.
7. You may transfer the Software Product with the printer(s), but only if the recipient agrees to accept the terms and conditions of this Agreement. Your license is automatically terminated if you transfer the Software Product and printer(s).
8. This License remains in force until terminated, and may be terminated by agreement between you and SATO Corporation, or by SATO Corporation, if you fail to comply with the terms of this License if such failure is not corrected within thirty (30) days after notice. When this License is terminated, you shall either return to the place you obtained them from, or destroy, the printer and all copies of the Software and documentation.

9. SATO Corporation warrants that for ninety (90) days after delivery, the Software will perform in accordance with specifications published by SATO Corporation, and that the distribution media will be free from defects in material and workmanship. SATO Corporation does not warrant that the Software is free from all bugs, errors and omissions.
10. Your exclusive remedy and the sole liability of SATO Corporation in connection with the Software is replacement of defective distribution media upon their return to SATO Corporation. SATO Corporation will not be liable for any loss or damage caused by delays in furnishing a Software Product or any other performance under this Agreement.

SATO Corporation does not warrant that the functions contained in the Software will meet your requirements or that the operation of the Software will be uninterrupted or error free.

11. Use, duplication or disclosure by the Government is subject to restrictions as set forth in the relevant guidelines of your country, such as the Rights in Technical Data and Computer Software clause at FAR 242.227- 7013, subdivision (b) (3) (ii) or subparagraph (c) (1) (ii), as appropriate. Further use, duplication or disclosure is subject to restrictions applicable to restricted rights software as set forth in FAR 52.227-19 (c) (2) or equivalent rules.

THE PARTIES AGREE THAT ALL OTHER WARRANTIES, EXPRESS OR IMPLIED, INCLUDING WARRANTIES OF FITNESS FOR A PARTICULAR PURPOSE AND MERCHANTABILITY ARE EXCLUDED.

SATO Corporation reserves the right to make changes and/or improvements in the Software without notice at any time.

IN NO EVENT WILL SATO CORPORATION BE LIABLE FOR LOST PROFITS, LOST DATA, BUSINESS INTERRUPTIONS OR ANY OTHER DIRECT, INDIRECT, INCIDENTAL OR CONSEQUENTIAL DAMAGES ARISING OUT OF THE USE OF OR INABILITY TO USE THIS PRODUCT, EVEN IF SATO CORPORATION HAS BEEN ADVISED OF THE POSSIBILITY OF SUCH DAMAGES, OR ANY DAMAGES CAUSED BY ABUSE OR MANIPULATION OF THE SOFTWARE. SOME STATES DO NOT ALLOW THE EXCLUSION OR LIMITATION OF LIABILITY FOR CONSEQUENTIAL OR INCIDENTAL DAMAGES, SO THE ABOVE LIMITATION MAY NOT APPLY TO YOU.

YOU ACKNOWLEDGE THAT YOU HAVE READ THIS AGREEMENT, UNDERSTAND IT, AND AGREE TO BE BOUND BY ITS TERMS AND CONDITIONS. NEITHER PARTY SHALL BE BOUND BY ANY STATEMENT OR REPRESENTATION NOT CONTAINED IN THIS AGREEMENT. NO CHANGE IN THIS AGREEMENT IS EFFECTIVE UNLESS WRITTEN AND SIGNED BY PROPERLY AUTHORIZED REPRESENTATIVES OF EACH PARTY. BY INSTALLING THIS SOFTWARE PRODUCT, YOU AGREE TO ACCEPT THE TERMS AND-CONDITIONS OF THIS AGREEMENT

## Copyrights

---

The contents of this document are proprietary information of SATO Corporation and/or its subsidiaries in Japan, the U.S and other countries. No part of this document may be reproduced, copied, translated or incorporated in any other material in any form or by any means, whether manual, graphic, electronic, mechanical or otherwise, without the prior written consent of SATO Corporation.

SATO Corporation and/or its subsidiaries in Japan, the U.S and other countries make no representations or warranties of any kind regarding this material, including, but not limited to, implied warranties of merchantability and fitness for a particular purpose. SATO Corporation shall not be held responsible for errors contained herein or any omissions from this material or for any damages, whether direct, indirect, incidental or consequential, in connection with the furnishing, distribution, performance or use of this material. SATO Corporation reserves the right to make changes and/or improvements in this product and document without notice at any time.

## Trademarks

---

SATO is a registered trademark of SATO Corporation and/or its subsidiaries in Japan, the U.S and other countries.

Microsoft, Windows and Internet Explorer are trademarks or registered trademarks of Microsoft Corporation. Other brands and their products are trademarks or registered trademark of their respective holders and should be noted as such.

## Software updating disclaimer

---

While all efforts have been taken to ensure accuracy and currency of the information contained herein, there are instances where the contents of this document may be outdated. In that case, proceed to the SATO America website ([www.satoamerica.com](http://www.satoamerica.com)) to check whether an updated document has been made available for your reference.

Alternatively, you can consult your nearest authorized SATO technical representative, as listed on the back cover, to obtain the relevant information about printing to SATO RFID printers via BEA WebLogic® RFID Edge Server 2.1 .

# Table of Contents

<b>Table of Contents .....</b>	<b>4</b>
<b>1. Introduction .....</b>	<b>5</b>
<b>2. Necessary software.....</b>	<b>5</b>
<b>3. Setup .....</b>	<b>6</b>
3.1. Launching WebLogic® RFID Edge Server .....	6
3.2. Setting Up New Device for Edge Server .....	6
3.3. PCSpec File .....	8
<b>4. Running of Sample Program .....</b>	<b>9</b>

## **1. Introduction**

Users are now able to print to SATO RFID printers via [BEA WebLogic® RFID Edge Server 2.1](http://e-docs.bea.com/rfid/edge_server/docs21/reader_refsp1/config_use.html#wp490650). The detail configuration can be found from the following URL:

[http://e-docs.bea.com/rfid/edge\\_server/docs21/reader\\_refsp1/config\\_use.html#wp490650](http://e-docs.bea.com/rfid/edge_server/docs21/reader_refsp1/config_use.html#wp490650)

This document explains how to print to SATO printers using BEA WebLogic® RFID Edge Server and the SATO utilities tools (.NET version).

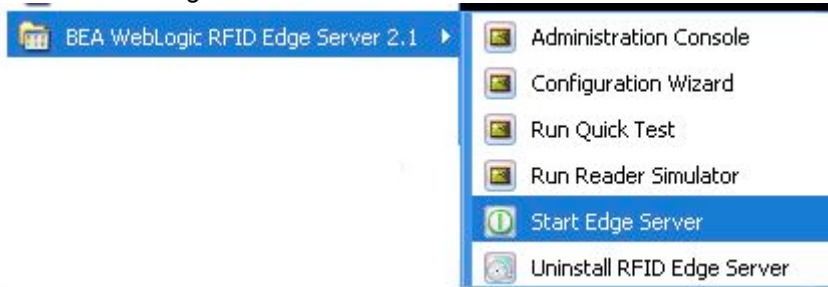
## **2. Necessary software**

- WebLogic® RFID Edge Server 2.1
- SATO Utilities tools for converting label variables
- .NET Framework 1.1
- Internet Information Service ( Version 5 or above )
- Internet Explorer (version 6 or above)

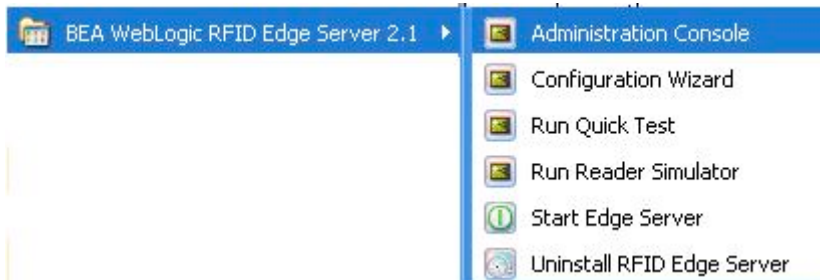
## 3. Setup

### 3.1. Launching WebLogic® RFID Edge Server

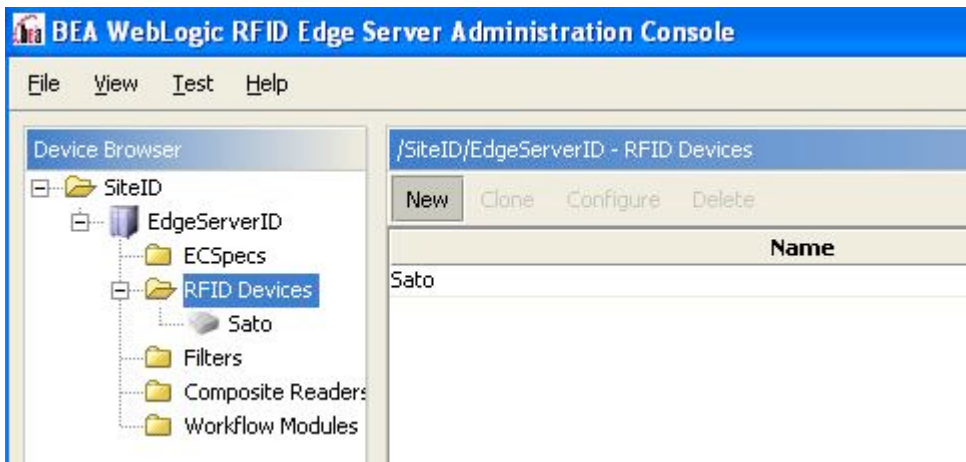
- Launch the Edge Server.



- Launch the Administration Console

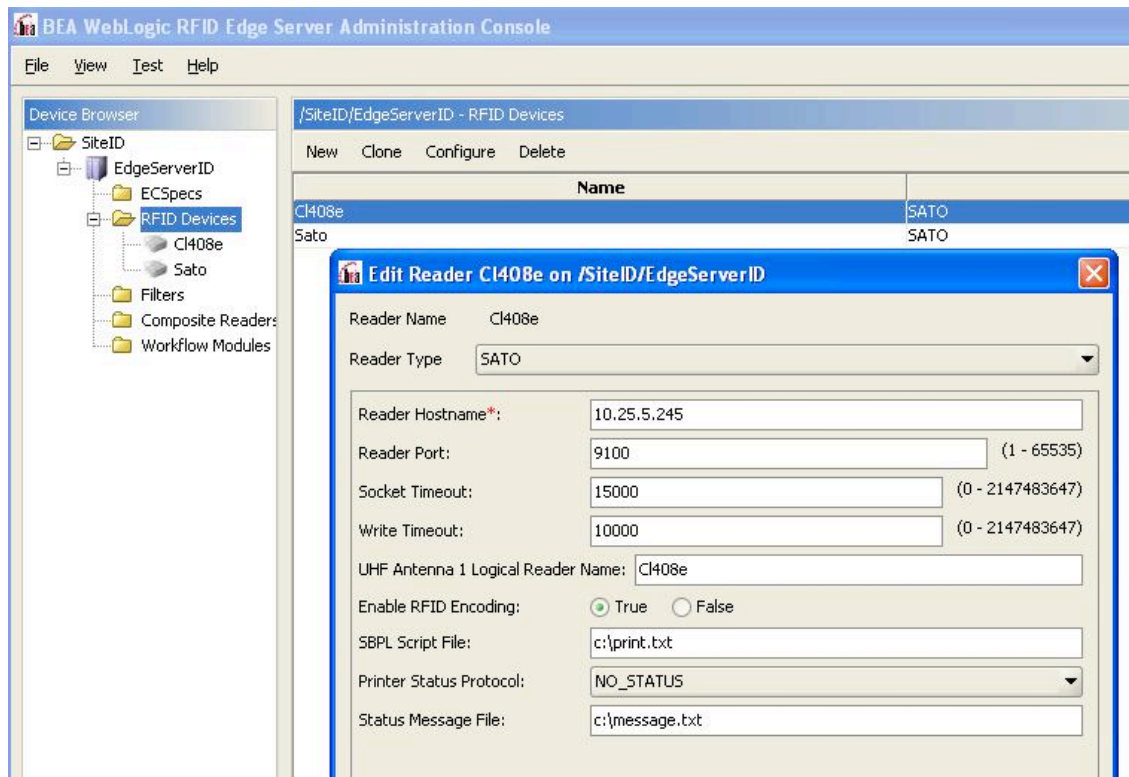


### 3.2. Setting Up New Device for Edge Server



Click on the "RFID Devices" and then click "New" to open the "Create Reader" window.

Switch on your printer and enter the information to register the new device. Note that Reader Name must not be repeated for the Edge Server to uniquely identify the reader. Please make sure the “Reader Type” must be “SATO”



### 3.3. PCSpec File

This file is to inform the Edge Server of which reader is to use when printing. The file defines the reader in the XML format. The following is a sample of the PCSpec file.

---

```
<?xml version="1.0" encoding="UTF-8" ?>
- <!--
  Specifies the various aspects of an ALE programming cycle. A
  programming cycle specification operates in the context of the edge
  server properties, defined in edge.props in the 'etc' directory of the
  Edge Server installation.
-->
- <PCSpec xmlns="http://schemas.connecterra.com/alepc">
- <!--
  Specifies a string to be included in PCWriteReport instances
  generated by this PCSpec. Optional.
-->
  <applicationData>application specific data can go here</applicationData>
- <logicalReaders>
- <!--
  determines which logical reader will be used by this
  programming cycle. Logical reader names are defined in edge.props.
-->
  <logicalReader>SATO</logicalReader>
</logicalReaders>
- <boundarySpec>
- <!--
  the boundarySpec determines when this programming cycle starts
  and stops. Because this sample program uses ALEPC.immediate(), a programming
  cycle starts whenever ALEPC.immediate() is called.
-->
- <!--
  Specifies maximum number of tag writing trials. Optional,
  default is unlimited number of trials.
-->
  <trials>1</trials>
- <!--
  Specifies maximum number of milliseconds to spend retrying failed
  tag writing operations. Optional, default is no time limit.
-->
  <duration>4000</duration>
</boundarySpec>
</PCSpec>
```

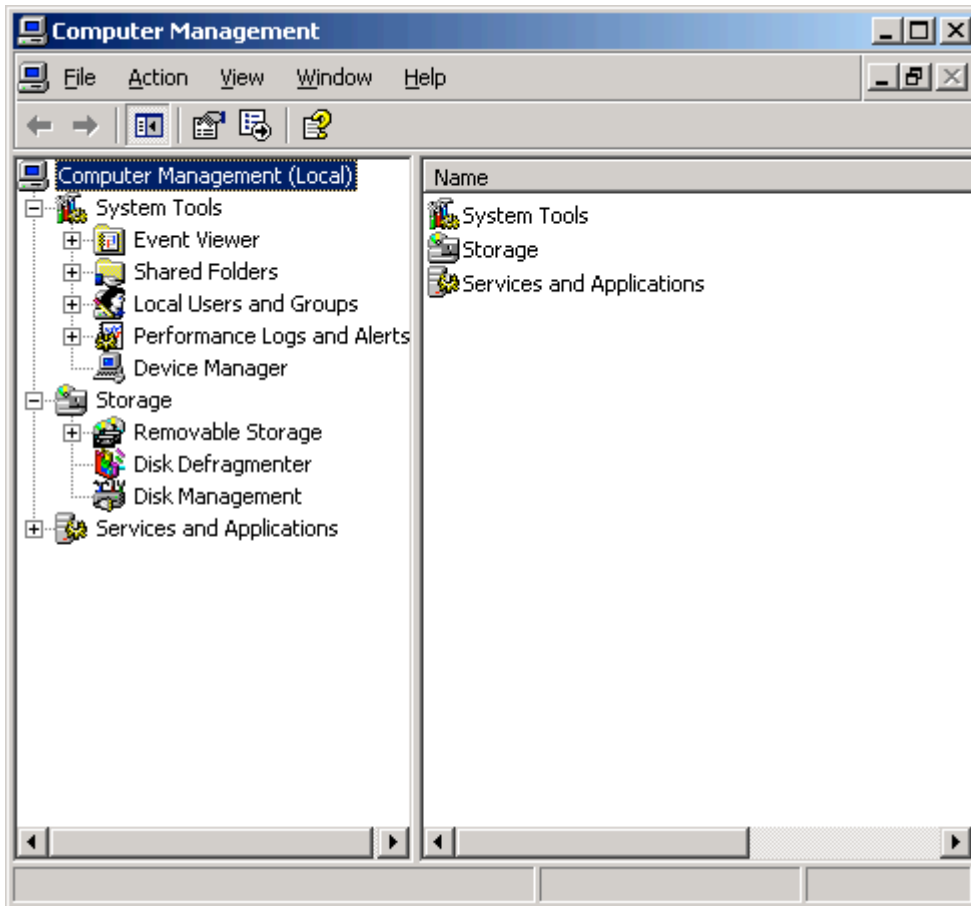
---



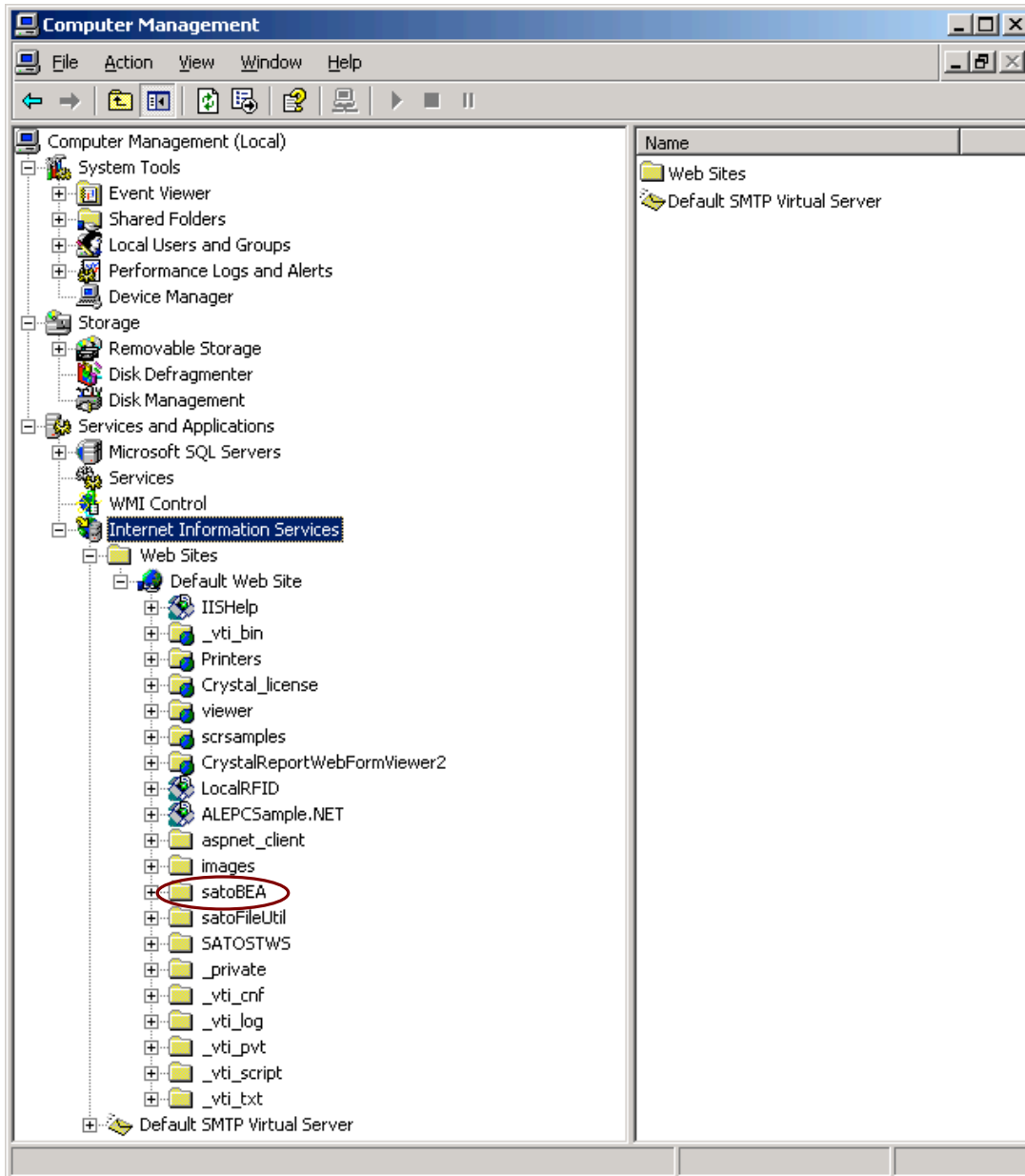
## 4. *Running of Sample Program*

Before starting the Tomcat, please make sure the following environment setting is done.

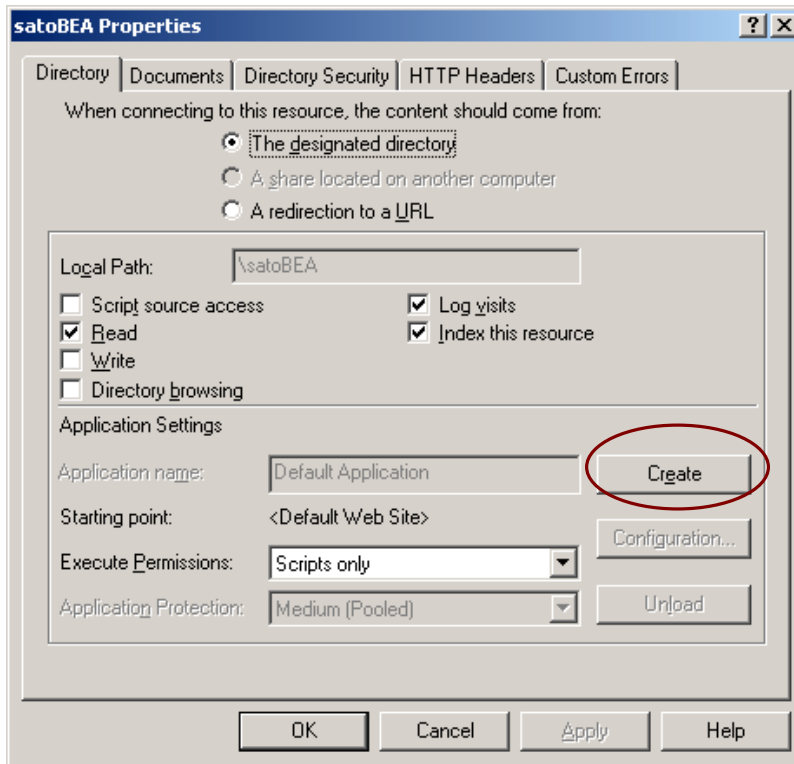
- 1) Put the sample program into the **C:\inetpub\wwwroot** directory of the machine.
- 2) Go to Start > Control Panel > Administrative Tools
- 3) Double click to launch “Computer Management” program



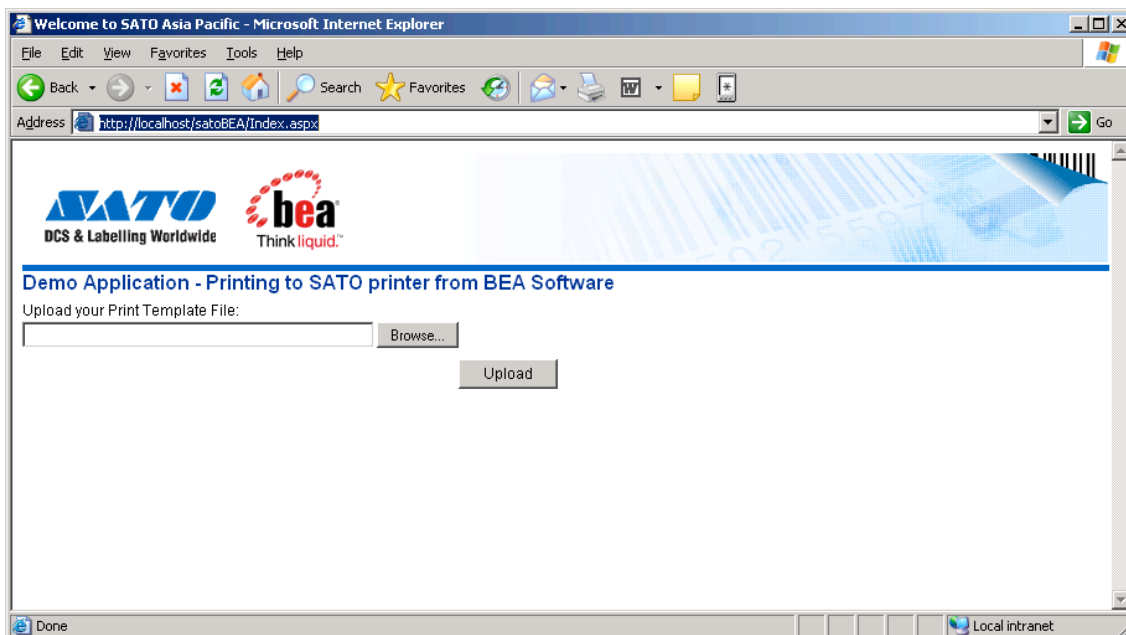
- 4) Expends the nodes under “Services and Application” > “Internet Information Services” > “Web Sites” > “Default Web Site” and locate for the sample program folder under the list.



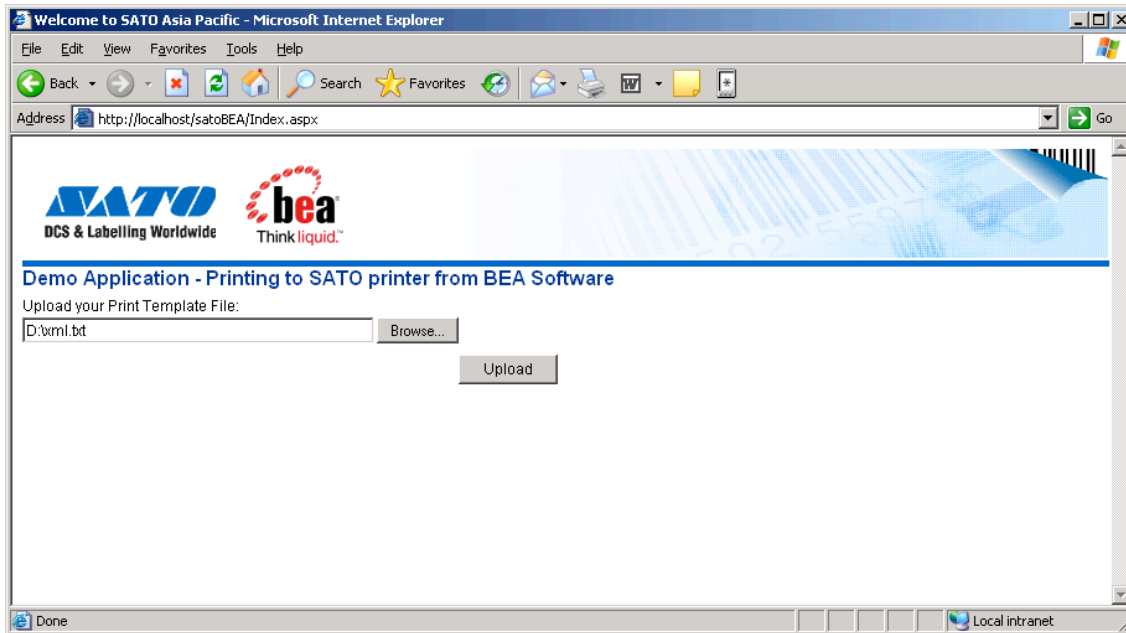
- 5) Right click on the sample application (satoBEA ) > properties to bring up the application properties. Under Directory tab, click on “Create” button to convert the web folder into a virtual directory. Click on “OK” to confirm the changes.



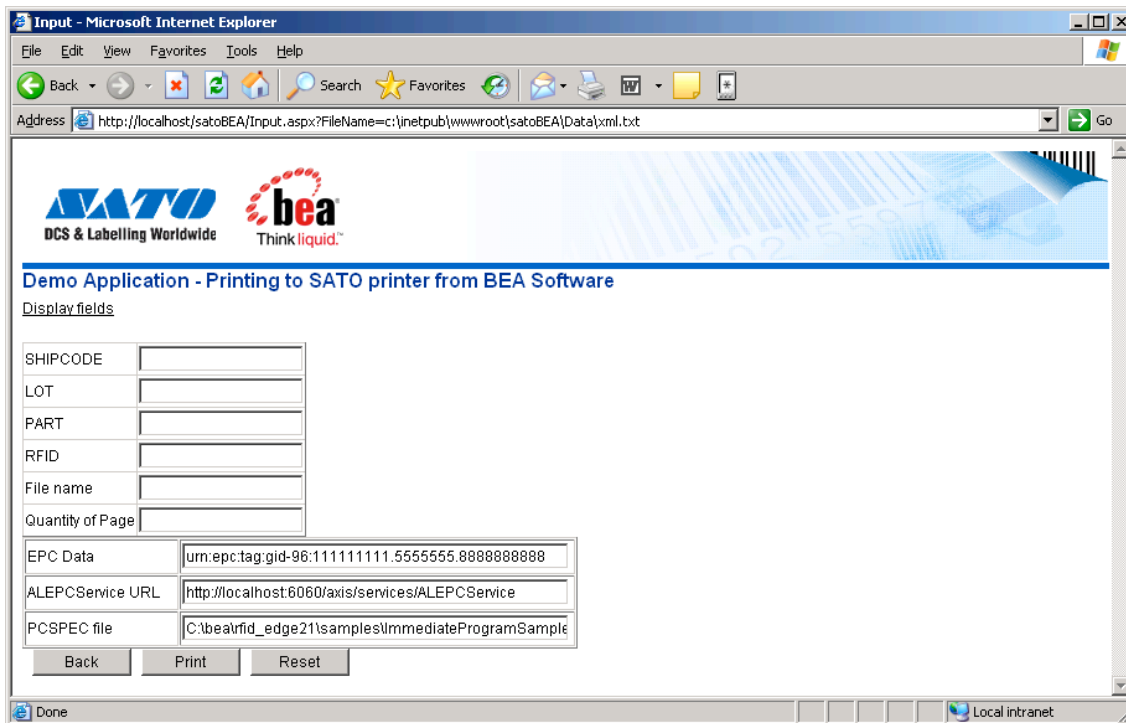
- 6) The sample program can be view at the following URL : <http://localhost/satoBEA/Index.aspx>



- 7) Click the “Browse” button and select the Label Template file and click the “Upload” button. A sample of the template is provided in the **satoBEA** directory.



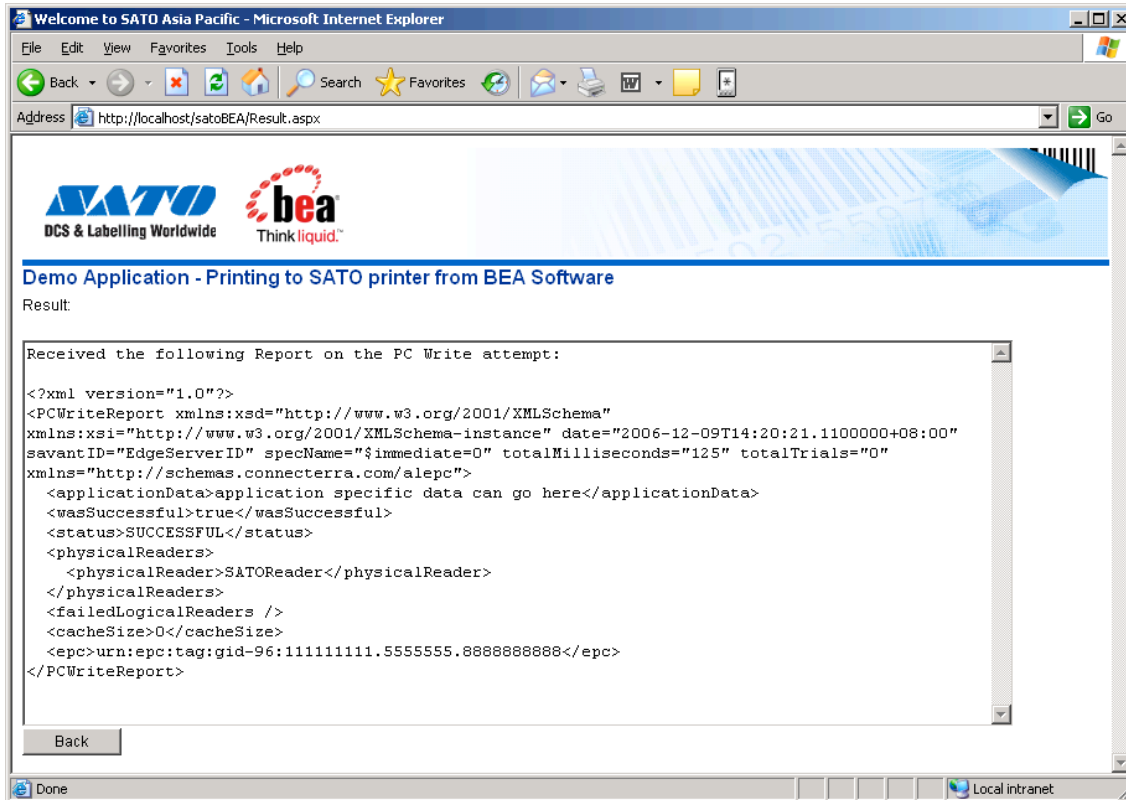
- 8) The SATO Utilities will then extract the variable fields from the template and display them on screen. User is to enter values for the variables. The default value for the **IP0 command** has been provided.



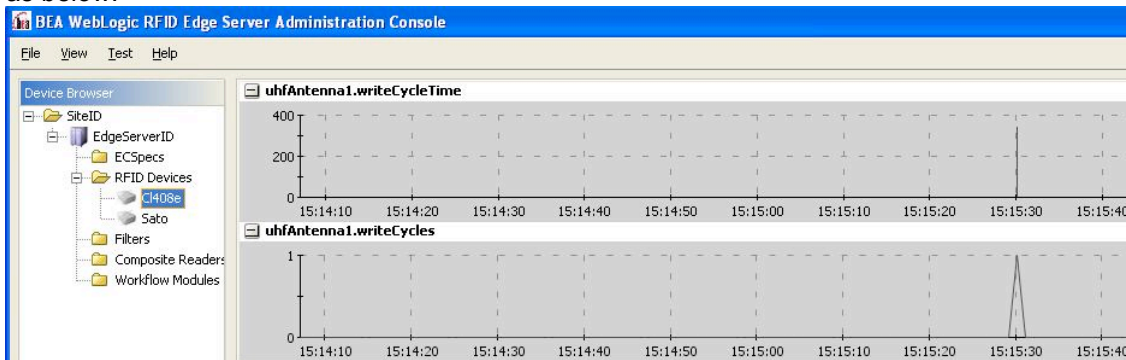
Note: ALEPCService URL is the Web reference to the Edge Server. PCSPEC file is the XML which defined the Reader to be used by the Edge Server, which is described in [Section 3.3 PCSpec File](#).

File name is the SBPL file which is to be passed BEA Edge Server for sending to printer. It is pre-defined while setting up the device. Please see [section 3.2 Setting Up New Device for Edge Server](#) for more information.

- 9) When the user data and printer are ready, click the “Print” button to send the data to print. The label with the user data should be printed out from the desired printer and the webpage will then reflect the print result.



The Administration Console of Edge Server should reflect the traffic of printing data in the graph feature as below:



## SATO GROUP OF COMPANIES

### Asia Pacific & Oceania Region

#### **SATO ASIA PACIFIC PTE. LTD.**

438A Alexandra Road #05-01/04, Alexandra  
Technopark, Singapore 119967  
Tel: +65-6271-5300  
Fax: +65-6273-6011  
Email: technical@satoasiapacific.com  
www.satoasiapacific.com

#### **SATO AUTO-ID MALAYSIA SDN. BHD.**

No.25, Jalan Pemberita U1/49,  
Temasya Industrial Park, Section U1, 40150  
Shah Alam, Selangor Darul Ehsan, Malaysia  
Tel: +60-3-7620-8901  
Fax: +60-3-5569-4977  
Email: service@satosms.com.my  
www.satoasiapacific.com

#### **SATO AUTO-ID (THAILAND) CO., LTD.**

292/1 Moo 1 Theparak Road,  
Tumbol Theparak, Amphur Muang,  
Samutprakarn 10270, Thailand  
Tel: +66-2-736-4460  
Fax: +66-2-736-4461  
Email: technical@satothailand.com  
www.satothailand.co.th

#### **SATO SHANGHAI CO., LTD.**

307 Haining Road, ACE Bldg,  
10th Floor, Hongkou Area, Shanghai, China  
200080  
Tel: +86-21-6306-8899  
Fax: +86-21-6309-1318  
Email: tech@satochina.com  
www.satochina.com

#### **SATO ASIA PACIFIC PTE. LTD.**

##### **Korea Representative Office**

6F, Korea Housing Center,  
Yeouido-dong 45-11, Yeongdeungpo-gu,  
Seoul, Korea 150-736  
Tel: +82-2-761-5072  
Fax: +82-2-761-5073  
Email: technical@satoasiapacific.com  
www.satoasiapacific.com

#### **SATO ASIA PACIFIC PTE. LTD.**

##### **India Representative Office**

Regus Level 2, Connaugh Place,  
Bund Garden Road, Pune. 411001, India  
Tel: +91-20-4014-7747  
Fax: +91-20-4014-7576  
Email: technical@satoasiapacific.com  
www.satoasiapacific.com

#### **SATO AUSTRALIA PTY LTD.**

1/1 Nursery Avenue, Clayton Business Park,  
Clayton, VIC 3168 Australia  
Tel: +61-3-8814-5330  
Fax: +61-3-8814-5335  
Email: enquiries@satoaustralia.com  
www.satoaustralia.com

#### **SATO NEW ZEALAND LTD.**

30 Apollo Drive, Mairangi Bay  
Auckland, New Zealand  
Tel: +64 9-477-2222  
Fax: +64-9-477-2228  
Email:  
global.warranty@satonewzealand.com  
www.satonewzealand.com

### European Region

#### **SATO LABELLING SOLUTIONS EUROPE GmbH (BELGIUM)**

Lambroekstraat 5, 1831 Diegem, Belgium  
Tel: +32 2 719 03 90  
Fax: +32 2 719 03 99  
Email: info@nl.satoeurope.com  
www.satoeurope.com

#### **SATO LABELLING SOLUTIONS EUROPE GmbH (GERMANY)**

Ersheimer Straße 71,  
69434 Hirschhorn, Germany  
Tel: +49-6272-9201-160  
Fax: +49-6272-9201-347  
Email: service@de.satoeurope.com  
www.satoeurope.com

#### **SATO LABELLING SOLUTIONS EUROPE GmbH (NORWAY)**

Hovfaret 4 0275 Oslo, Norway  
Tel.: +47-225-106-70  
Fax: +47-225-106-71  
Email: kundeservice@satonorge.com  
www.satoeurope.com

#### **SATO LABELLING SOLUTIONS EUROPE GmbH (NETHERLANDS)**

Techniekweg 1b, 3481 MK Harmelen,  
Netherlands  
Tel.: +31-348-444437  
Fax: +31-348-446403  
Email: info@nl.satoeurope.com  
www.satoeurope.com

#### **SATO LABELLING SOLUTIONS EUROPE GmbH (ITALY)**

Viale Europa 39/1,  
20090 Cusago, Milano, Italy  
Tel.: +39-2-903-944-64  
Fax: +39-2-903-940-35  
Email: info@it.satoeurope.com  
www.satoeurope.com

#### **SATO LABELLING SOLUTIONS EUROPE GmbH (SWITZERLAND)**

Allmendstraße 19,  
8320 Fehraltorf, Switzerland  
Tel: +41-44-954-84-00  
Fax: +41-44-954-84-09  
Email: info@ch.satoeurope.com  
www.satoeurope.com

#### **SATO LABELLING SOLUTIONS EUROPE GmbH (AUSTRIA)**

Niederlassing Austria  
Jochen-Rindt-Straße 13  
1230 Wien, Austria  
Tel: +43-2762-52690  
Fax: +43-2762-52018  
Email: info@at.satoeurope.com  
www.satoeurope.com

#### **SATO LABELLING SOLUTIONS EUROPE GmbH (DENMARK)**

Naverland 29A DK-2600  
Glostrup, Denmark  
Tel.: +45-43204700  
Fax: +45-43204709  
Email: info@dk.satoeurope.com  
www.satoeurope.com

#### **SATO POLSKA SP. Z O.O.**

ul. Wrocławska 123, 55-015 Radwanice Św.  
Katarzyna, Poland  
Tel: +48-71-381-03-60  
Fax: +48-71-381-03-68  
Email: info@sato.pl  
www.sato.pl

#### **SATO IBERIA S.A.**

Dels Corrales Nous, 35-39  
Pol. Can Roqueta, 08202 - Sabadell  
Barcelona, Spain  
Tel: +34-902-333-341  
Fax: +34-902-333-349  
Email: info@es.satoeurope.com  
www.satoeurope.com

#### **SATO FRANCE S.A.S.**

Parc d'Activités, Rue Jacques Messenger,  
59 175 Templemars, France  
Tel: +33-3-20-62-96-40  
Fax: +33-3-20-62-96-55  
www.satoeurope.com

#### **SATO UK LTD.**

Valley Road, Harwich,  
Essex CO12 4RR, United Kingdom  
Tel: +44-1255-240000  
Fax: +44-1255-240111  
Email: enquiries@satouk.com  
www.satouk.com

### American Region

#### **SATO AMERICA, INC.**

10350-A Nations Ford Road, Charlotte, NC  
28273, U.S.A.  
Tel: +1-704-644-1650  
Fax: +1-704-644-1662  
www.satoamerica.com

#### **SATO LABELING SOLUTIONS AMERICA, INC.**

1140 Windham Parkway, Romeoville,  
Illinois 60446, U.S.A.  
Tel: +1-800-645-3290  
Fax: +1-630-771-4210  
www.satolabeling.com