

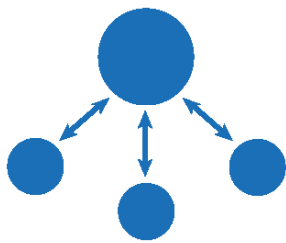
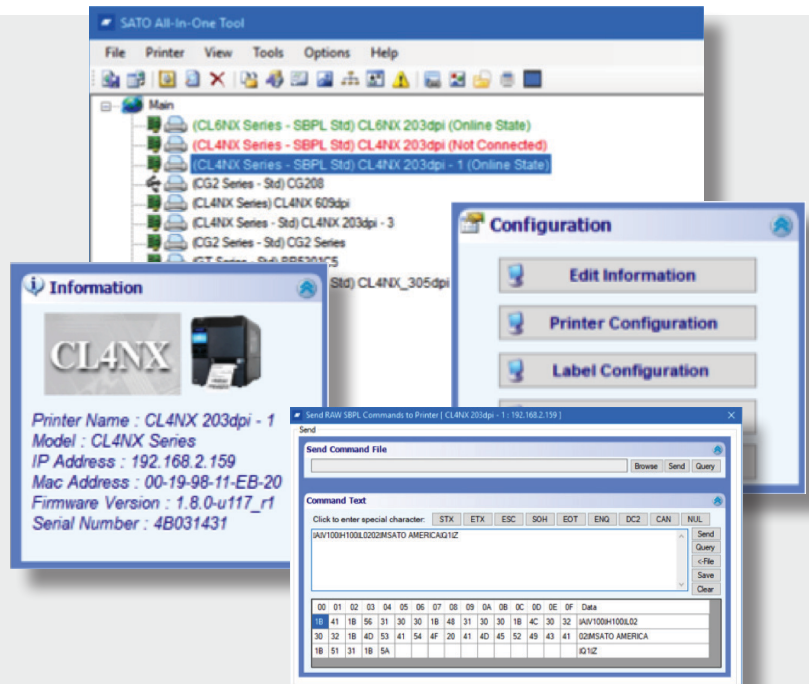


# All-In One Tool



## All-In One Printer Management Utility

- Auto-discovery of SATO printer models
- Saving & Loading Printer Configuration
- View/Save Printer Configuration
- Firmware Download
- Download firmware, fonts or graphics
- Send and query SBPL command
- True Type Font Download (Expanded Memory)
- Graphics Download
- Send and query printer commands
- Bitmap Font Download (Internal Memory)
- Initiate Test Prints or restart printer
- Printer Display Customization for CLNX
- Support for export NFC configuration



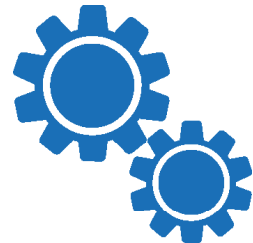
### 1 Organize

Use the graphical treeview structure to organize connected printers into groups using custom folders & display names.



### 2 Connect

Link to supported printer(s) via Auto-Discover or via manual entry.



### 3 Control

Configure/control any SATO printer regardless of its location within your organization.



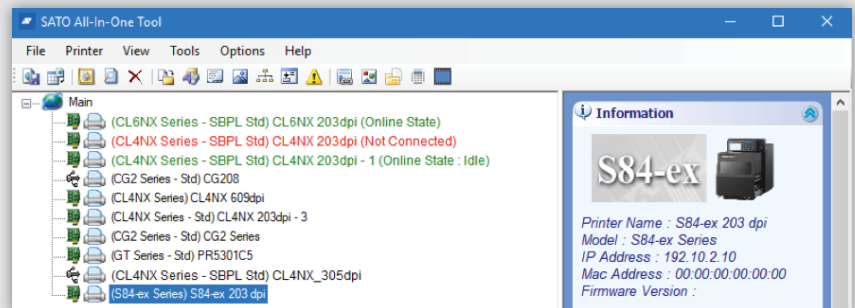
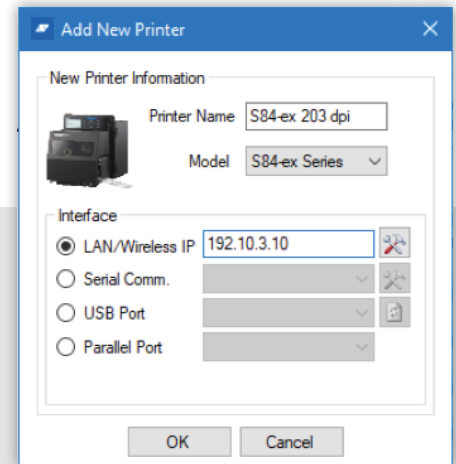


# GENERAL SPECIFICATIONS

SATO All-In-One Tool

**SATO's All-In-One** printer management utility allows users to seamlessly configure SATO products across a system-wide infrastructure. Whether the printer is connected, parallel, serial, USB, Ethernet or wirelessly, the All-In-One Tool gives you the access to local or networked SATO printers so that you can easily configure them to meet your needs. All you'll need is any Windows PC connected to your network or any standalone Windows PC environment for this one stop configuration tool.

- **Auto-Discover and configure all of your SATO printers** - Centralize and manage printers whether USB, Parallel, Serial or across networks (LAN/WLAN).
- **Download printer specific settings and firmware** - Either to a single printer or system wide broadcast to similar printer types.
- **Download custom fonts and graphics to printer memory** - Enhancing throughput and optimizing print strings.
- **Diagnose and download custom commands and view printer responses** - Helping debug and speed up custom software development for easier integration.
- **Best of all, its Free!** Available for download from [www.satoamerica.com](http://www.satoamerica.com) or install directly from the SATO Printer Utility CD.



## Supported Printers\*

- |                        |               |                         |                   |
|------------------------|---------------|-------------------------|-------------------|
| • CG2 / CG4 Series     | • GL4e Series | • M10e                  | • S84 Series      |
| • CL4NX / CL6NX Series | • GT4e Series | • M84SE Series          | • S84-ex / S86-ex |
| • CL4e / CL6e Series   | • GY4 Series  | • M84 Pro Series        | • TG3 Series      |
| • CT4i Series          | • LM4 Series  | • MB2i / MB4i           | • TH2             |
| • FX3-LX               | • LT408       | • PW208 / PW208m Series |                   |

\*Some features might not be available for all printers.

## System Requirements

- A computer running Windows® operating systems: Windows Server 2008 R2, Windows 7, Windows 8, Windows 8.1, Windows Server 2012, Windows Server 2012 R2, Windows 10, Windows Server 2016.
- Installed .NET Framework 4.5 (or higher version)
- At least one supported SATO printer model that can connect to the computer running All-In-One-Tool
- Supported Interfaces: LAN, RS232c, IEEE1284 Parallel Port, USB

**SATO AMERICA  
CORPORATE**  
14125 South Bridge Circle  
Charlotte, NC 28273  
Phone: (704) 644-1650  
[sales-sal@sato-global.com](mailto:sales-sal@sato-global.com)

**LABEL MANUFACTURING, SERVICE & SALES**  
UNITED STATES MEXICO CENTRAL AMERICA  
CANADA CARIBBEAN

[www.satoamerica.com](http://www.satoamerica.com)

©2018 SATO America. All rights Reserved. Rev H • Any unauthorized reproduction of this content, in part or whole, is strictly prohibited • SATO is a registered trademark of SATO Corporation and its subsidiaries in Japan, the U.S. and other countries. All other trademarks are the property of their respective owners.