



Tag It. Bag It.

Tags and Labels



Great Looking Tags Bag Great Customer Sales

Great Tag Production Communicates Brand Identity Awareness In:

- Brand Name
- Brand Logos
- Brand Taglines
- Product Identification
- Company URL's
- Regional Communication

Create Tags or Labels to Display Important & Functional Product Information:

- Price
- Price Markdowns
- Inventory Clearance
- Product SKU and PLU
- Product Origin
- Size/Style/Gender ID



Built especially for retail industry applications, the TG3 will serve as your printer of choice for tagging and labeling apparel, accessories, houseware's, furnishings and much more.



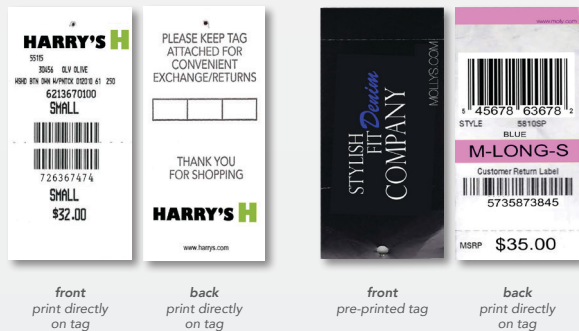
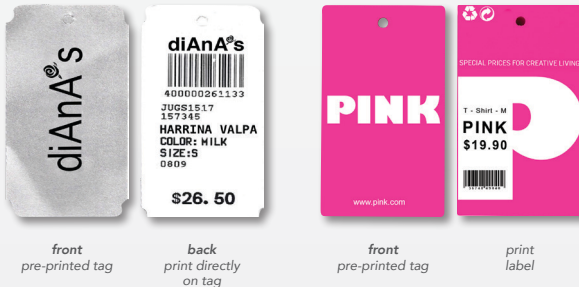
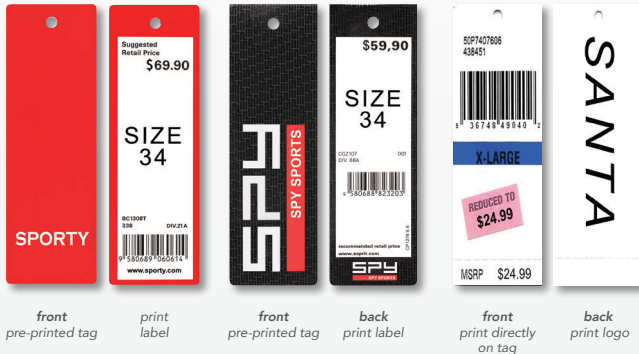
FEATURES

Tag It. Bag It. | TG3

The TG3 – Higher Performance Printing for Short to Medium Batch and Demand Print Runs

Smart Functions

- 2-in-1 Printing Solution – Print Tags and Labels

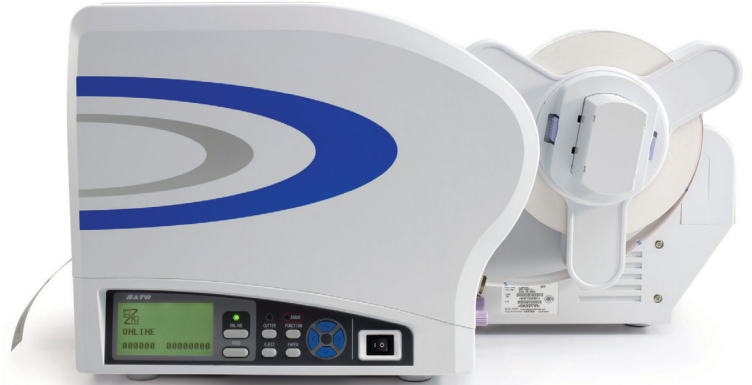


- Automated Print-Cut-Stack Function for Hassle Free Printing
- Separation of Tags for Batch Printing



The printer separates tags by cutting the first tag longer or using the ink ribbon mechanism to place an ink mark on the side of each batch separator tag.

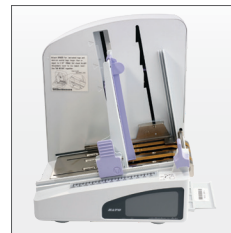
- Energy-Saving LCD Display
- Precision Cutting of Tags & Labels
- Standalone Printing Using the Optional Keypad



Powerful Features

- High Throughput
- High-Speed Printing up to 10 ips
- Supports Tags up to 0.33 mm Thick
- Large User-Friendly LCD Display
- Plug-in Interface Cards (USB/LAN/Parallel/RS-232C)

Accessories



Stacker – Tag Printing
Reduce downtime between print jobs with Print, Cut & Stack option.



Rewinder – Tag & Label Printing
Spooling of printed material affords larger batch run printing.



Keypad - Allows for standalone printing without a PC or Host connectivity. Please call for availability.



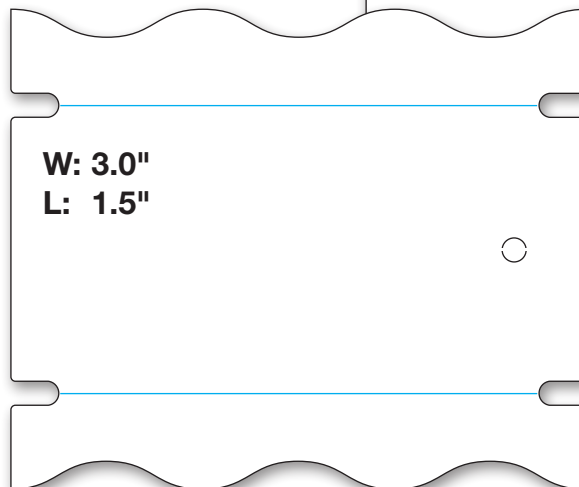
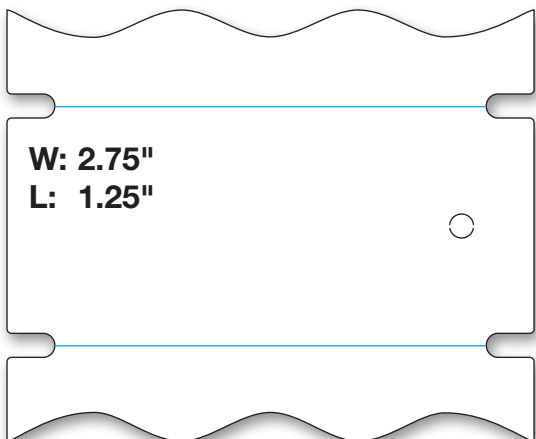
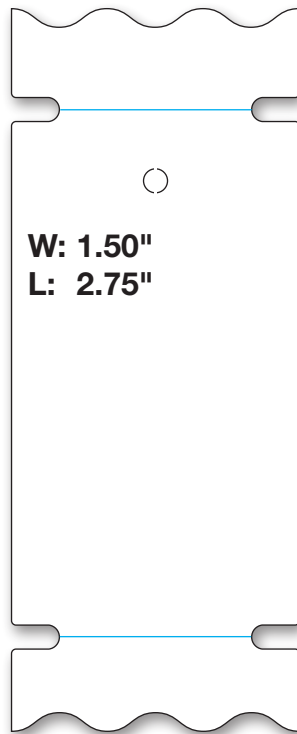
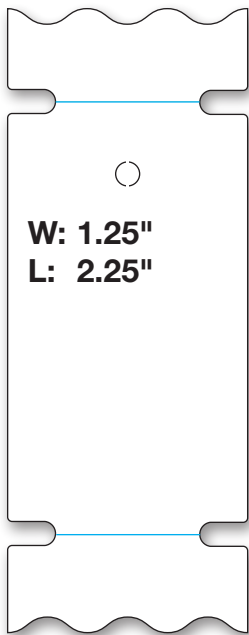
SUPPLIES

Tag It. Bag It.

SATO Tag Stock

Our broad selection of tags and labels is specifically designed to enhance the output quality and complement the features of all printer systems. These products will provide performance, reliability and economy to support your most critical barcode printing applications. All genuine SATO supplies are unconditionally guaranteed!

SATO can pre-print labels with your company logo, address or create a custom design for you.

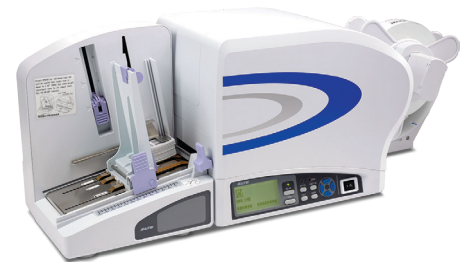




GENERAL SPECIFICATIONS

TG308 | TG312

PRINTER MODEL		TG308	TG312
PRINT SPECIFICATIONS			
Printing Method		Direct Thermal/Thermal Transfer	
Print Resolution		203 dpi (8 dots/mm)	305 dpi (12 dots/mm)
Printing Speed		Maximum 10 ips (250mm/sec)	
Maximum Print Area		3.1" (80 mm) x 9.4" (240 mm)	
Memory		8 MB Flash ROM, 16 MB SDRAM	
MEDIA SPECIFICATIONS			
Sensor Type		I-Mark Sensor (Reflection type), Label Gap Sensor (Transmissive type)	
Media Type		Roll and Fanfold (Face-in, Face-out)	
Media Size	Label (Continuous)	Width: 0.9" to 3.1" (22 to 80 mm) Pitch: 0.6" to 9.3" (16 to 237 mm)	
	Label (Cutter)	Width: 0.9" to 3.1" (22 to 80 mm) Pitch: 0.9" to 9.3" (22 to 237 mm)	
	Tag (Continuous)	Width: 1.3" to 3.3" (32 to 83 mm) Pitch: 1.0" to 9.4" (25 to 240 mm)	
	Tag (Cutter)	Width: 1.3" to 3.3" (32 to 83 mm) Pitch: 1.0" to 9.4" (25 to 240 mm)	
	Thickness	Label: 0.006" to 0.01" (0.14 to 0.265 mm) Tag: 0.006" to 0.013" (0.157 to 0.33 mm)	
	Roll Specs	Maximum outer diameter: 10" (250 mm) - Inner diameter: 3" (76.4 mm) and 4" (102 mm)	
Ribbon (TT only)		Width: Maximum 3.3" (84 mm), Maximum outer diameter: 1476' (450 m), Face Out/Face In	
FONT/SYMBOLOGIES			
Internal Fonts		XU, XS, XM, XB, XL, OCR-A (15x22, 22x33), OCR-B (20x24, 30x36), CG Times, CG Triumvirate	
Barcode Symbolologies	Linear	UPC-A/UPC-E, JAN/EAN, CODE39, CODE93, CODE128, GS1-128 (UCC/EAN128), CODABAR (NW-7), ITF, Industrial 2of5, Matrix 2of5, BOOKLAND, MSI, POSTNET, GS1 DataBar (RSS) barcode	
	2-D	QR code, MicroQR, PDF417, MicroPDF, MAXI code, GS1 DataMatrix (ECC200)	
	Composite Symbols	EAN-13 Composite, EAN-8 Composite, UPC-A Composite, UPC-E Composite, GS1 DataBar Composite, GS1 DataBar Truncated Composite, GS1 DataBar Stacked Composite, GS1 DataBar Stacked Omni-Directional Composite, GS1 DataBar Limited Composite, GS1 DataBar Expanded Composite, GS1 DataBar Expanded Stacked Composite, GS1-128 Composite	
INTERFACE CHARACTERISTICS			
Interfaces		Plug-In Interface Card, RS232C for Keypad, EXT Port Interface	
		Plug-In Interface Card Options: IEEE1284, RS232C, USB, LAN	
Command		SBPL (Ver 4.2) SATO Barcode Printer Language	
OPERATING CHARACTERISTICS			
Power Requirements		Input power voltage: AC 100V - 240V, ± 10% (Full range), 132W/134VA (Print ratio 30%) In standby: 20W/22VA	
Environment	Operating	41 to 104 F (5° to 40°C), 30 to 80% RH, Non-condensing	
	Storage	23 to 140 F (-5° to 60°C), 30 to 90% RH, Non-condensing	
Regulatory Approvals		FCC ISB Class B, VL60950-1(2001), CSA222, FCC ISC	
Dimensions		11.18" (284 mm) W x 21.73" (552 mm) D x 11.81" (300 mm) H	
Weight		35.71 lbs. (16.2 kg)	
OTHER			
Optional Accessories		Stacker, Rewinder, SATO Keypad, SOLO Keyboard	



SATO AMERICA CORPORATE

10350-A Nations Ford Rd
Charlotte, NC 28273
Phone: (704) 644-1650
Fax: (704) 644-1662
sales-sallc@sato-global.com

LABEL MANUFACTURING, SERVICE & SALES

UNITED STATES MEXICO CENTRAL AMERICA
CANADA CARIBBEAN

www.satoamerica.com

©2018 SATO America. All rights reserved. Rev H • Any unauthorized reproduction of this content, in part or whole, is strictly prohibited • SATO is a registered trademark of SATO Corporation and its subsidiaries in Japan, the U.S. and other countries. All other trademarks are the property of their respective owners.